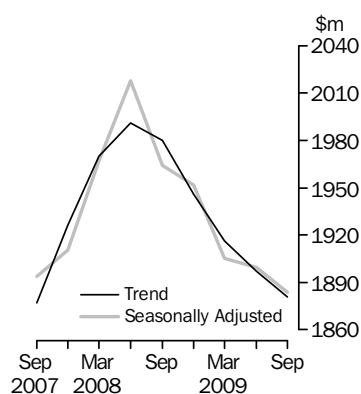


# TOURIST ACCOMMODATION, AUSTRALIA

EMBARGO: 11.30AM (CANBERRA TIME) FRI 8 JAN 2010

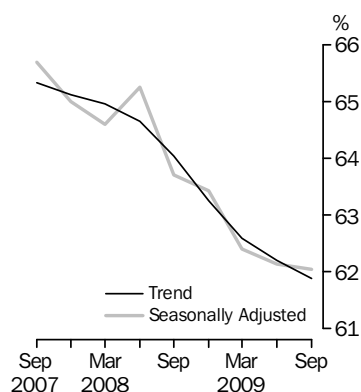
## ACCOMMODATION TAKINGS

Australia



## ROOM OCCUPANCY RATE

Australia



## INQUIRIES

For further information about these and related statistics, contact the National Information and Referral Service on 1300 135 070.

## KEY FIGURES

### ACCOMMODATION WITH 15 ROOMS OR MORE

	Jun Qtr 09	Sep Qtr 09	Jun Qtr 09 to Sep Qtr 09	Sep Qtr 08 to Sep Qtr 09
<b>Trend</b>				
Takings from accommodation (\$m)	1 897.1	1 880.7	-0.9 %	-5.0 %
Room occupancy rate (%)	62.2	61.9	-0.3 pts	-2.3 pts

### Seasonally Adjusted

Takings from accommodation (\$m)	1 899.6	1 883.9	-0.8 %	-4.1 %
Room occupancy rate (%)	62.2	62.1	-0.1 pts	-1.7 pts

## KEY POINTS

### ACCOMMODATION TAKINGS

- In the September 2009 quarter, the trend estimate of total accommodation takings for hotels, motels and serviced apartments with 15 or more rooms decreased by 0.9% to \$1,880.7 million compared with the June quarter 2009.
- Over the same period, the seasonally adjusted estimate dropped by 0.8% to \$1883.9 million.

### ROOM OCCUPANCY RATE

- The September quarter 2009 trend estimate room occupancy rate of 61.9% for hotels, motels and serviced apartments with 15 or more rooms was 0.3 percentage points lower than the previous quarter.
- This is the ninth consecutive quarterly decline in the trend estimate of room occupancy rates for hotels, motels and serviced apartments with 15 or more rooms.
- At 62.1%, the seasonally adjusted room occupancy rate was 0.1 percentage points below the June quarter 2009 level.

## NOTES

### FORTHCOMING ISSUES

*ISSUE (Quarter)*

*RELEASE DATE*

December 2009

30 March 2010

March 2010

30 June 2010

.....

### ABOUT THIS ISSUE

This issue presents results from the September quarter 2009 Survey of Tourist Accommodation (STA) for the following categories of establishments:

- licensed hotels and resorts with facilities and 5 or more rooms
- motels, private hotels and guest houses with facilities and 5 or more rooms
- serviced apartments with 5 or more units
- caravan parks with 40 or more powered sites
- holiday flats, units and houses of letting entities with 15 or more rooms or units
- visitor hostels with 25 or more bed spaces.

Ian Ewing

Acting Australian Statistician

# CONTENTS

	page
Abbreviations . . . . .	4
Summary of Findings . . . . .	5

## TABLES

### ORIGINAL, SEASONALLY ADJUSTED AND TREND

<b>1</b> Hotels, motels and serviced apartments with 15 or more rooms . . . . .	10
---	----

### SUMMARY

<b>2</b> Hotels, motels and serviced apartments . . . . .	12
<b>3</b> Licensed hotels and resorts . . . . .	14
<b>4</b> Motels, private hotels and guest houses . . . . .	16
<b>5</b> Serviced apartments . . . . .	18
<b>6</b> Caravan parks . . . . .	20
<b>7</b> Holiday flats, units and houses . . . . .	22
<b>8</b> Visitor hostels . . . . .	24

### STAR GRADING

<b>9</b> Hotels, motels and serviced apartments with 5-14 rooms . . . . .	25
<b>10</b> Hotels, motels and serviced apartments with 15 or more rooms . . . . .	27
<b>11</b> Hotels, motels and serviced apartments with 5 or more rooms . . . . .	29

### STATES AND TERRITORIES

<b>12</b> Hotels, motels and serviced apartments with 5-14 rooms . . . . .	31
<b>13</b> Hotels, motels and serviced apartments with 15 or more rooms . . . . .	34
<b>14</b> Hotels, motels and serviced apartments with 5 or more rooms . . . . .	37
<b>15</b> Caravan parks, short-term . . . . .	40
<b>16</b> Caravan parks, long-term . . . . .	43
<b>17</b> Caravan parks, total . . . . .	46
<b>18</b> Holiday flats, units and houses, real estate agents . . . . .	49
<b>19</b> Holiday flats, units and houses, other letting entities . . . . .	51
<b>20</b> Holiday flats, units and houses, total . . . . .	53
<b>21</b> Visitor hostels . . . . .	55

## OTHER INFORMATION

Explanatory Notes . . . . .	57
Glossary . . . . .	64

## ABBREVIATIONS

'000	thousand
\$'000	thousand dollars
\$m	million dollars
AAA	Australian Automobile Association
ABS	Australian Bureau of Statistics
ACT	Australian Capital Territory
ASGC	Australian Standard Geographical Classification
cat. no.	Catalogue number
GST	goods and services tax
no.	number
NSW	New South Wales
NT	Northern Territory
pts	percentage points
qtr	quarter
Qld	Queensland
SA	South Australia
SLA	statistical local area
STA	Survey of Tourist Accommodation
Tas.	Tasmania
TR	Tourism Region
Vic.	Victoria
WA	Western Australia

## SUMMARY OF FINDINGS

### ORIGINAL

*Hotels, motels and serviced apartments*

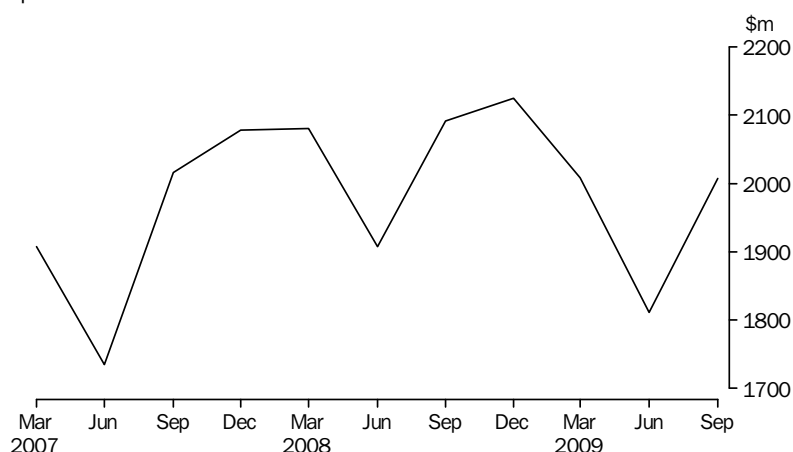
This summary contains key findings for original estimates. While trend and seasonally adjusted data are only available for hotels, motels and serviced apartments with 15 or more rooms, original estimates have two additional data series comprising hotels, motels and serviced apartments with 5 to 14 rooms and 5 or more rooms.

Original series are impacted by seasonal variations and irregular or non-seasonal influences. Comparison between quarters should be made with caution.

### ACCOMMODATION TAKINGS

In the September quarter 2009, accommodation takings were \$2,007.3 million for hotels, motels and serviced apartments with 5 or more rooms, comprising \$1930.6 million for those establishments with 15 or more rooms and \$76.7 million for those with 5 to 14 rooms.

### TAKINGS FROM ACCOMMODATION, Hotels, motels and serviced apartments with 5 or more rooms—Australia



Accommodation takings in September quarter 2009 for hotels, motels and serviced apartments with 15 or more rooms were highest in New South Wales (\$581.2 million) and Queensland (\$542.8 million).

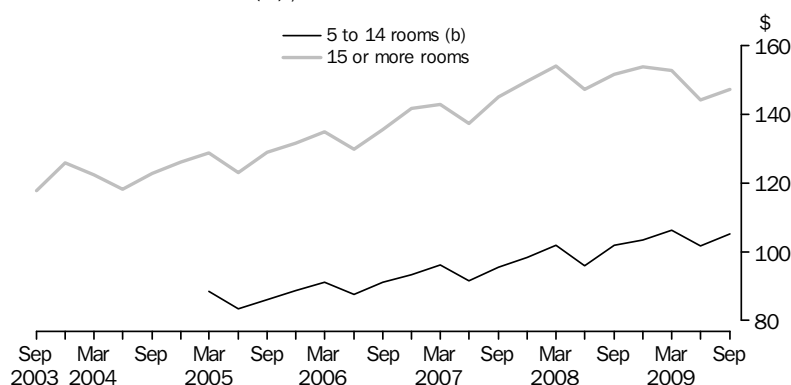
For Australia, the September quarter 2009 average takings per room night occupied were \$145.08 for establishments with 5 or more rooms. This was heavily influenced by hotels, motels and serviced apartments with 15 or more rooms which contributed 96.2% of total takings, and had an average takings per room night occupied of \$147.30. The average for 5 to 14 room establishments was \$105.15

## SUMMARY OF FINDINGS *continued*

Hotels, motels and  
serviced apartments  
*continued*

### ACCOMMODATION TAKINGS *continued*

#### AVERAGE TAKINGS (a), Australia



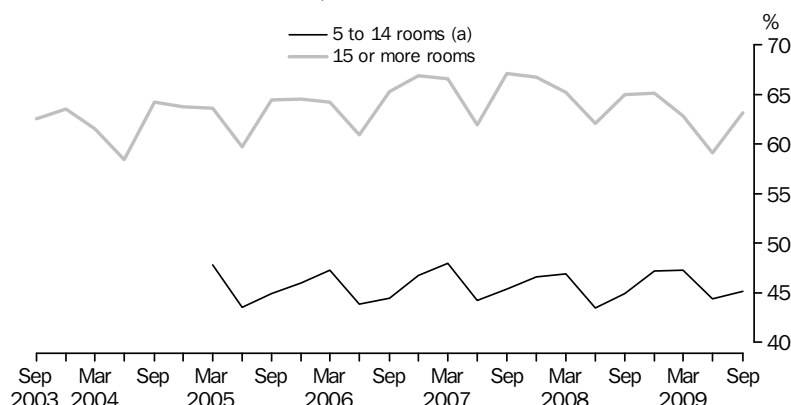
(a) Per room night occupied.

(b) These establishments were included in the survey from March 2005 onwards.

#### ROOM OCCUPANCY RATE

The room occupancy rate for hotels, motels and serviced apartments with 5 or more rooms was 61.8% in the September quarter 2009. For hotels, motels and serviced apartments with 15 or more rooms, the room occupancy rate was 63.1%, while demand for 5 to 14 room hotels, motels and serviced apartments was lower, as reflected by a room occupancy rate of 45.1%.

#### ROOM OCCUPANCY RATE, Australia



(a) These establishments were included in the survey from March 2005 onwards.

#### ROOM NIGHTS OCCUPIED

Room nights occupied were 13.8 million in the September quarter 2009 for hotels, motels and serviced apartments with 5 or more rooms. For hotels, motels and serviced apartments with 15 or more rooms, room nights occupied were 13.1 million in September quarter 2009, while for establishments with 5 to 14 rooms, room nights occupied were 0.7 million.

## SUMMARY OF FINDINGS *continued*

### *Hotels, motels and serviced apartments continued*

#### ROOM NIGHTS OCCUPIED *continued*

New South Wales contributed the highest proportion (30.5%) of room nights occupied for hotels, motels and serviced apartments with 15 or more rooms, closely followed by Queensland at 29.1%.

#### AVERAGE LENGTH OF STAY

The average length of stay in September quarter 2009 for hotels, motels and serviced apartments with 5 or more rooms was 2.2 days. For establishments with 5 to 14 rooms, the average length of stay for 2009 has remained at 1.9 days.

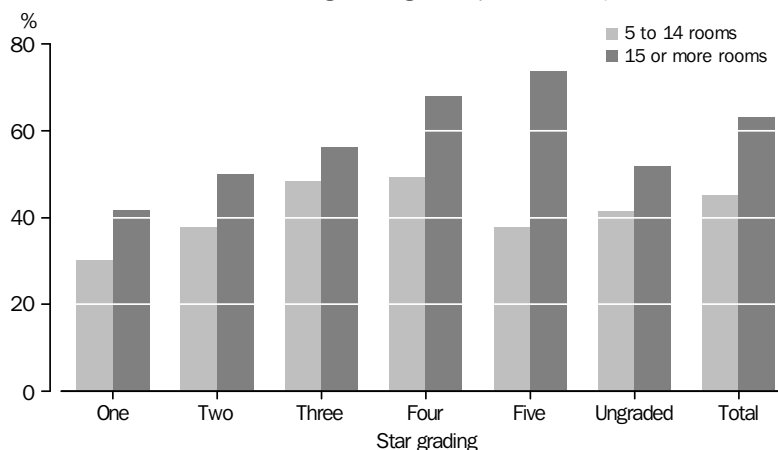
Queensland (2.7 days) reported the longest average length of stay for hotels, motels and serviced apartments with 15 or more rooms, followed by Western Australia (2.4 days). South Australia had the shortest average length of stay being 1.9 days.

#### STAR GRADING

In the September quarter 2009, the room occupancy rate for five-star hotels, motels and serviced apartments with 5 or more rooms was 73.3% compared with 38.0% for one-star establishments. For hotels, motels and serviced apartments with 15 or more rooms, the room occupancy rate was 73.6% for five-star establishments compared with 38.0% for five-star establishments with 5 to 14 rooms.

In the 5-14 rooms category, room occupancy rates in the September quarter 2009, four-star establishments had the highest rate with 49.2% and one-star establishments had the lowest at 30.2%.

OCCUPANCY RATES, Stargrading—September Qtr 2009



In the September quarter 2009, the average takings per room night occupied for five-star hotels, motels and serviced apartments with 5 or more rooms was \$223.39 compared with \$91.74 for establishments with one star. The corresponding September quarter 2009 average takings for establishments with 15 or more rooms was \$223.25 for five-star establishments and \$101.17 for one-star establishments.

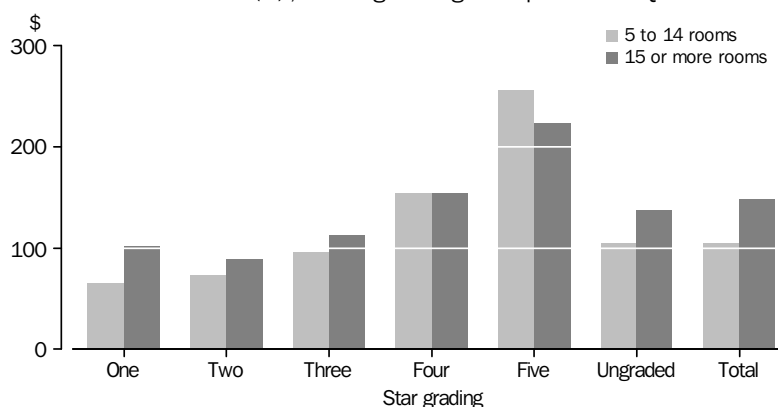
In comparison, establishments with 5 to 14 rooms had the highest average takings per room night occupied for five-star establishments (\$255.93), but lowest average takings per room night occupied for one-star establishments (\$65.11).

## SUMMARY OF FINDINGS *continued*

*Hotels, motels and serviced apartments continued*

STAR GRADING *continued*

AVERAGE TAKINGS (a), Star grading—September Qtr 2009



(a) Per room night occupied

*Caravan parks, holiday flats, units and houses, and visitor hostels*

### ACCOMMODATION TAKINGS

In the September quarter 2009, accommodation takings for caravan parks were \$278.5 million. Of this, New South Wales contributed the highest amount with \$79.2 million or 28.4% of the Australian total for the quarter.

Short-term caravan park takings were \$233.8 million in the September quarter 2009, 84.0% of total caravan park takings.

Accommodation takings for holiday flats, units and houses were \$154.1 million in the September quarter 2009. Real estate takings accounted for 23.3% of total holiday flats, units and houses takings, the remainder were for other letting entities.

For visitor hostels, accommodation takings were \$54.4 million in the September quarter 2009.

### OCCUPANCY RATE

The site occupancy rate for all caravan parks in the September quarter 2009 was 54.6%. Short-term caravan park occupancy rate was 51.6% and long-term caravan park occupancy rate was 75.1%.

For holiday flats, units and houses, the unit occupancy rate was 45.1% in the September quarter 2009.

The bed occupancy rate for visitor hostels in Australia in the September quarter 2009 was 47.9%. The Australian Capital Territory, the Northern Territory and Queensland had the highest bed occupancy rates for the September quarter with 60.7%, 60.1% and 57.0% respectively. While Tasmania had the lowest bed occupancy rate for visitor hostels at 13.9%.

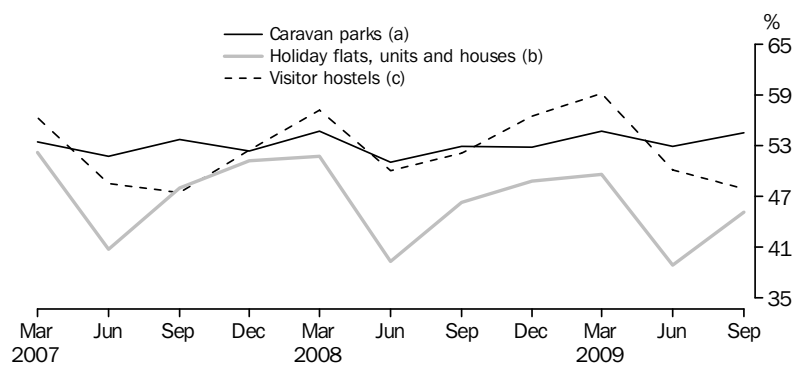


## SUMMARY OF FINDINGS *continued*

Caravan parks, holiday  
flats, units and houses,  
and visitor hostels  
*continued*

OCCUPANCY RATE *continued*

### OCCUPANCY RATES, Australia



(a) Site occupancy rate.  
(b) Unit occupancy rate.  
(c) Bed occupancy rate.

Period	ORIGINAL		SEASONALLY ADJUSTED		TREND	
	Takings from accommodation		Takings from accommodation		Takings from accommodation	
	\$m	Room occupancy rate	\$m	Room occupancy rate	\$m	Room occupancy rate
<b>2006</b>						
March Quarter	1 649.2	64.2	1 627.7	63.8	1 623.0	63.7
June Quarter	1 526.5	60.9	1 675.9	64.3	1 664.7	64.0
September Quarter	1 740.5	65.3	1 690.4	63.9	1 716.0	64.6
December Quarter	1 866.6	66.9	1 784.6	65.3	1 763.3	65.2
<b>2007</b>						
March Quarter	1 832.3	66.6	1 810.5	66.2	1 806.9	65.7
June Quarter	1 667.1	61.9	1 824.6	65.3	1 843.0	65.8
September Quarter	1 942.6	67.1	1 893.8	65.9	1 876.9	65.5
December Quarter	2 000.6	66.8	1 910.5	65.2	1 926.1	65.3
<b>2008</b>						
March Quarter	1 999.8	65.2	1 967.0	64.7	1 970.1	65.1
June Quarter	1 838.3	62.1	2 017.6	65.4	1 990.8	64.8
September Quarter	2 014.8	65.0	1 964.3	63.8	1 979.9	64.2
December Quarter	2 044.1	65.1	1 951.7	63.5	1 945.7	63.3
<b>2009</b>						
March Quarter	1 928.8	62.9	1 905.4	62.5	1 916.2	62.7
June Quarter	1 739.3	59.1	1 899.6	62.2	1 897.1	62.2
September Quarter	1 930.6	63.1	1 883.9	62.1	1 880.7	61.9

Period	ORIGINAL		SEASONALLY ADJUSTED		TREND	
	Takings change	Room occupancy	Takings change	Room occupancy	Takings change	Room occupancy
	from prev. qtr	change from prev. qtr	from prev. qtr	change from prev. qtr	from prev. qtr	change from prev. qtr
	%	pts	%	pts	%	pts
<b>2006</b>						
March Quarter	-0.1	-0.3	3.3	0.9	2.0	0.4
June Quarter	-7.4	-3.3	3.0	0.5	2.6	0.4
September Quarter	14.0	4.4	0.9	-0.4	3.1	0.5
December Quarter	7.2	1.6	5.6	1.4	2.8	0.6
<b>2007</b>						
March Quarter	-1.8	-0.3	1.4	0.9	2.5	0.5
June Quarter	-9.0	-4.7	0.8	-0.9	2.0	0.1
September Quarter	16.5	5.2	3.8	0.6	1.8	-0.3
December Quarter	3.0	-0.4	0.9	-0.7	2.6	-0.2
<b>2008</b>						
March Quarter	—	-1.6	3.0	-0.4	2.3	-0.2
June Quarter	-8.1	-3.1	2.6	0.7	1.1	-0.3
September Quarter	9.6	2.9	-2.6	-1.6	-0.5	-0.6
December Quarter	1.5	0.1	-0.6	-0.3	-1.7	-0.8
<b>2009</b>						
March Quarter	-5.6	-2.3	-2.4	-1.1	-1.5	-0.7
June Quarter	-9.8	-3.7	-0.3	-0.3	-1.0	-0.4
September Quarter	11.0	4.0	-0.8	-0.1	-0.9	-0.3

— nil or rounded to zero (including null cells)

## SUMMARY OF HOTELS, MOTELS AND SERVICED APARTMENTS, Australia

	<i>Establishments</i>	<i>Rooms</i>	<i>Bed spaces</i>	<i>Persons employed</i>	<i>Room nights occupied</i>	<i>Room occupancy rate</i>
	no.	no.	no.	no.	'000	%
HOTELS MOTELS AND SERVICED APARTMENTS WITH 5 TO 14 ROOMS						
<b>2008</b>						
September Quarter	1 904	18 347	53 870	11 330	754.3	44.9
December Quarter	1 886	18 167	53 408	11 193	779.7	47.2
<b>2009</b>						
March Quarter	1 866	17 956	52 896	10 588	748.7	47.2
June Quarter	1 834	17 693	52 401	10 527	708.2	44.4
September Quarter	1 823	17 611	51 821	10 735	729.5	45.1
<b>Year ended September 2008</b>	..	..	..	..	3 058.9	45.5
<b>Year ended September 2009</b>	..	..	..	..	2 966.1	46.0
HOTELS MOTELS AND SERVICED APARTMENTS WITH 15 OR MORE ROOMS						
<b>2008</b>						
September Quarter	4 267	222 266	634 395	116 999	13 273.6	65.0
December Quarter	4 277	223 319	637 147	113 936	13 276.8	65.1
<b>2009</b>						
March Quarter	4 301	225 733	642 391	112 139	12 623.6	62.9
June Quarter	4 292	225 581	641 977	110 126	12 063.0	59.1
September Quarter	4 301	225 874	638 127	111 373	13 106.5	63.1
<b>Year ended September 2008</b>	..	..	..	..	52 088.2	64.8
<b>Year ended September 2009</b>	..	..	..	..	51 069.9	62.6
HOTELS MOTELS AND SERVICED APARTMENTS WITH 5 OR MORE ROOMS						
<b>2008</b>						
September Quarter	6 171	240 613	688 265	128 329	14 027.8	63.4
December Quarter	6 163	241 486	690 555	125 129	14 056.5	63.8
<b>2009</b>						
March Quarter	6 167	243 689	695 287	122 727	13 372.3	61.7
June Quarter	6 126	243 274	694 378	120 653	12 771.2	58.0
September Quarter	6 124	243 485	689 948	122 108	13 836.0	61.8
<b>Year ended September 2008</b>	..	..	..	..	55 147.1	63.3
<b>Year ended September 2009</b>	..	..	..	..	54 036.0	61.3

.. not applicable

SUMMARY OF HOTELS, MOTELS AND SERVICED APARTMENTS, Australia *continued*

	<i>Guest nights occupied</i>	<i>Bed occupancy rate</i>	<i>Guest arrivals</i>	<i>Average length of stay</i>	<i>Takings from accommodation</i>
	'000	%	'000	days	\$'000
HOTELS MOTELS AND SERVICED APARTMENTS WITH 5 TO 14 ROOMS					
<b>2008</b>					
September Quarter	1 379.6	28.0	748.9	1.8	76 854
December Quarter	1 453.3	29.9	793.5	1.8	80 610
<b>2009</b>					
March Quarter	1 422.4	30.5	740.5	1.9	79 626
June Quarter	1 285.9	27.3	686.1	1.9	72 054
September Quarter	1 350.1	28.4	713.0	1.9	76 712
<b>Year ended September 2008</b>	5 644.3	28.6	3 104.3	1.8	304 642
<b>Year ended September 2009</b>	5 511.7	29.0	2 933.1	1.9	309 003
HOTELS MOTELS AND SERVICED APARTMENTS WITH 15 OR MORE ROOMS					
<b>2008</b>					
September Quarter	23 176.8	39.7	10 243.9	2.3	2 014 752
December Quarter	23 453.1	40.4	10 379.1	2.3	2 044 095
<b>2009</b>					
March Quarter	22 495.0	39.5	9 713.7	2.3	1 928 783
June Quarter	20 874.5	36.0	9 361.3	2.2	1 739 272
September Quarter	23 217.5	39.6	10 315.0	2.3	1 930 613
<b>Year ended September 2008</b>	90 860.8	39.6	40 476.7	2.2	7 853 462
<b>Year ended September 2009</b>	90 040.1	38.9	39 769.0	2.3	7 642 764
HOTELS MOTELS AND SERVICED APARTMENTS WITH 5 OR MORE ROOMS					
<b>2008</b>					
September Quarter	24 556.4	38.8	10 992.8	2.2	2 091 606
December Quarter	24 906.4	39.6	11 172.6	2.2	2 124 705
<b>2009</b>					
March Quarter	23 917.5	38.8	10 454.2	2.3	2 008 410
June Quarter	22 160.4	35.3	10 047.4	2.2	1 811 327
September Quarter	24 567.6	38.8	11 028.0	2.2	2 007 325
<b>Year ended September 2008</b>	96 505.1	38.7	43 581.1	2.2	8 158 104
<b>Year ended September 2009</b>	95 551.9	38.1	42 702.1	2.2	7 951 767

## SUMMARY OF LICENSED HOTELS AND RESORTS, AUSTRALIA

	<i>Establishments</i>	<i>Rooms</i>	<i>Bed spaces</i>	<i>Persons employed</i>	<i>Room nights occupied</i>	<i>Room occupancy rate</i>
	no.	no.	no.	no.	'000	%
.....						
LICENSED HOTELS WITH 5 TO 14 ROOMS						
.....						
<b>2008</b>						
September Quarter	440	4 209	11 156	6 422	143.3	37.1
December Quarter	435	4 163	11 117	6 332	150.0	39.3
March Quarter	435	4 162	11 053	5 943	148.1	39.7
June Quarter	423	4 053	10 828	5 855	138.0	37.2
<b>2009</b>						
September Quarter	423	4 088	10 965	6 035	138.9	37.0
<b>Year ended September 2008</b>	..	..	..	..	582.6	37.5
<b>Year ended September 2009</b>	..	..	..	..	574.9	38.3
.....						
LICENSED HOTELS WITH 15 OR MORE ROOMS						
.....						
<b>2008</b>						
September Quarter	837	82 006	214 185	71 418	5 193.4	68.9
December Quarter	845	82 483	215 884	69 204	5 249.4	69.8
March Quarter	852	84 338	220 781	68 541	5 083.2	67.8
June Quarter	853	84 365	221 827	66 830	4 820.3	63.2
<b>2009</b>						
September Quarter	853	84 701	221 594	67 262	5 260.1	67.6
<b>Year ended September 2008</b>	..	..	..	..	20 758.1	69.7
<b>Year ended September 2009</b>	..	..	..	..	20 413.0	67.1
.....						
LICENSED HOTELS WITH 5 OR MORE ROOMS						
.....						
<b>2008</b>						
September Quarter	1 277	86 215	225 341	77 840	5 336.8	67.4
December Quarter	1 280	86 646	227 001	75 536	5 399.4	68.4
March Quarter	1 287	88 500	231 834	74 484	5 231.2	66.5
June Quarter	1 276	88 418	232 655	72 685	4 958.3	62.0
<b>2009</b>						
September Quarter	1 276	88 789	232 559	73 297	5 399.1	66.2
<b>Year ended September 2008</b>	..	..	..	..	21 340.7	68.1
<b>Year ended September 2009</b>	..	..	..	..	20 988.0	65.7
.....						
..	not applicable					

SUMMARY OF LICENSED HOTELS AND RESORTS, AUSTRALIA *continued*

	Guest nights occupied	Bed occupancy rate	Guest arrivals	Average length of stay	Takings from accommodation
	'000	%	'000	days	\$'000

## LICENSED HOTELS WITH 5 TO 14 ROOMS

<b>2008</b>					
September Quarter	211.9	20.7	119.3	1.8	10 739
December Quarter	229.4	22.5	135.1	1.7	11 856
March Quarter	225.6	22.8	129.3	1.7	12 137
June Quarter	205.3	20.7	118.8	1.7	10 905
<b>2009</b>					
September Quarter	211.6	21.0	124.6	1.7	11 078
<b>Year ended September 2008</b>	884.2	21.5	507.5	1.7	43 612
<b>Year ended September 2009</b>	871.9	21.8	507.8	1.7	45 976

## LICENSED HOTELS WITH 15 OR MORE ROOMS

<b>2008</b>					
September Quarter	8 231.0	41.9	3 734.6	2.2	933 441
December Quarter	8 422.8	43.0	3 804.4	2.2	964 352
March Quarter	8 297.6	42.6	3 648.4	2.3	912 295
June Quarter	7 705.1	38.5	3 514.2	2.2	800 255
<b>2009</b>					
September Quarter	8 607.4	42.3	3 906.5	2.2	883 648
<b>Year ended September 2008</b>	32 973.1	42.5	15 056.9	2.2	3 752 591
<b>Year ended September 2009</b>	33 033.0	41.6	14 873.5	2.2	3 560 551

## LICENSED HOTELS WITH 5 OR MORE ROOMS

<b>2008</b>					
September Quarter	8 442.8	40.8	3 853.9	2.2	944 180
December Quarter	8 652.3	42.0	3 939.5	2.2	976 208
March Quarter	8 523.2	41.6	3 777.7	2.3	924 432
June Quarter	7 910.5	37.7	3 633.0	2.2	811 160
<b>2009</b>					
September Quarter	8 819.0	41.3	4 031.1	2.2	894 726
<b>Year ended September 2008</b>	33 857.3	41.4	15 564.4	2.2	3 796 203
<b>Year ended September 2009</b>	33 904.9	40.6	15 381.3	2.2	3 606 527

## SUMMARY OF MOTELS, PRIVATE HOTELS AND GUEST HOUSES, Australia

<i>Period</i>	<i>Establishments</i> no.	<i>Rooms</i> no.	<i>Bed spaces</i> no.	<i>Persons employed</i> no.	<i>Room nights occupied</i> '000	<i>Room occupancy rate</i> %
MOTELS AND GUEST HOUSES WITH 5 TO 14 ROOMS						
<b>2008</b>						
September Quarter	1 111	11 057	30 885	3 758	459.0	45.4
December Quarter	1 108	10 994	30 692	3 720	474.7	47.7
<b>2009</b>						
March Quarter	1 085	10 753	30 035	3 494	446.0	47.4
June Quarter	1 070	10 603	29 727	3 535	430.7	45.3
September Quarter	1 063	10 545	29 455	3 558	438.8	45.4
<b>Year ended September 2008</b>	..	..	..	..	1 879.8	46.2
<b>Year ended September 2009</b>	..	..	..	..	1 790.2	46.5
MOTELS AND GUEST HOUSES WITH 15 OR MORE ROOMS						
<b>2008</b>						
September Quarter	2 484	87 902	250 858	30 014	4 769.8	59.0
December Quarter	2 475	87 718	250 123	29 240	4 697.3	58.7
<b>2009</b>						
March Quarter	2 483	87 602	249 403	28 531	4 389.1	56.4
June Quarter	2 477	87 455	247 929	28 193	4 285.8	54.3
September Quarter	2 473	87 077	245 702	28 539	4 533.8	56.6
<b>Year ended September 2008</b>	..	..	..	..	18 642.9	58.3
<b>Year ended September 2009</b>	..	..	..	..	17 906.0	56.5
MOTELS AND GUEST HOUSES WITH 5 OR MORE ROOMS						
<b>2008</b>						
September Quarter	3 595	98 959	281 743	33 772	5 228.8	57.5
December Quarter	3 583	98 712	280 815	32 960	5 172.0	57.5
<b>2009</b>						
March Quarter	3 568	98 355	279 438	32 025	4 835.1	55.4
June Quarter	3 547	98 058	277 656	31 728	4 716.5	53.3
September Quarter	3 536	97 622	275 157	32 097	4 972.5	55.4
<b>Year ended September 2008</b>	..	..	..	..	20 522.7	56.9
<b>Year ended September 2009</b>	..	..	..	..	19 696.1	55.4
..	not applicable					



SUMMARY OF MOTELS, PRIVATE HOTELS AND GUEST HOUSES, Australia *continued*

<i>Period</i>	<i>Guest nights occupied</i>	<i>Bed occupancy rate</i>	<i>Guest arrivals</i>	<i>Average length of stay</i>	<i>Takings from accommodation</i>
	'000	%	'000	days	\$'000

## MOTELS AND GUEST HOUSES WITH 5 TO 14 ROOMS

<b>2008</b>					
September Quarter	802.4	28.4	495.3	1.6	46 253
December Quarter	840.3	30.3	517.0	1.6	47 781
<b>2009</b>					
March Quarter	806.5	30.8	475.5	1.7	46 395
June Quarter	742.8	28.0	444.4	1.7	43 174
September Quarter	768.3	28.5	457.0	1.7	45 328
<b>Year ended September 2008</b>	3 312.1	29.1	2 049.2	1.6	183 648
<b>Year ended September 2009</b>	3 157.9	29.4	1 894.0	1.7	182 679

## MOTELS AND GUEST HOUSES WITH 15 OR MORE ROOMS

<b>2008</b>					
September Quarter	8 100.7	35.1	4 425.0	1.8	547 739
December Quarter	8 025.8	35.2	4 380.9	1.8	542 303
<b>2009</b>					
March Quarter	7 555.5	34.2	4 052.5	1.9	505 881
June Quarter	7 176.8	32.1	3 912.5	1.8	483 533
September Quarter	7 737.5	34.3	4 219.4	1.8	520 772
<b>Year ended September 2008</b>	31 503.1	34.4	17 334.1	1.8	2 097 360
<b>Year ended September 2009</b>	30 495.6	33.9	16 565.3	1.8	2 052 488

## MOTELS AND GUEST HOUSES WITH 5 OR MORE ROOMS

<b>2008</b>					
September Quarter	8 903.1	34.4	4 920.4	1.8	593 992
December Quarter	8 866.1	34.7	4 897.9	1.8	590 084
<b>2009</b>					
March Quarter	8 362.0	33.8	4 528.0	1.8	552 276
June Quarter	7 919.7	31.7	4 356.9	1.8	526 707
September Quarter	8 505.8	33.6	4 676.4	1.8	566 100
<b>Year ended September 2008</b>	34 815.2	33.8	19 383.3	1.8	2 281 008
<b>Year ended September 2009</b>	33 653.5	33.5	18 459.3	1.8	2 235 167

## SUMMARY OF SERVICED APARTMENTS, Australia

<i>Period</i>	<i>Establishments</i> no.	<i>Rooms</i> no.	<i>Bed spaces</i> no.	<i>Persons employed</i> no.	<i>Room nights occupied</i> '000	<i>Room occupancy rate</i> %
SERVICED APARTMENTS WITH 5 TO 14 ROOMS						
<b>2008</b>						
September Quarter	353	3 081	11 829	1 150	151.9	53.9
December Quarter	343	3 010	11 599	1 141	155.0	56.1
<b>2009</b>						
March Quarter	346	3 041	11 808	1 151	154.6	57.0
June Quarter	341	3 037	11 846	1 137	139.5	50.6
September Quarter	337	2 978	11 401	1 142	151.8	55.4
<b>Year ended September 2008</b>	..	..	..	..	596.5	53.9
<b>Year ended September 2009</b>	..	..	..	..	601.0	54.8
SERVICED APARTMENTS WITH 15 OR MORE ROOMS						
<b>2008</b>						
September Quarter	946	52 358	169 352	15 567	3 310.3	68.7
December Quarter	957	53 118	171 140	15 492	3 330.1	68.3
<b>2009</b>						
March Quarter	966	53 793	172 207	15 067	3 151.3	65.5
June Quarter	962	53 761	172 221	15 103	2 956.9	60.6
September Quarter	975	54 096	170 831	15 572	3 312.6	66.7
<b>Year ended September 2008</b>	..	..	..	..	12 687.2	67.9
<b>Year ended September 2009</b>	..	..	..	..	12 750.9	65.3
SERVICED APARTMENTS WITH 5 OR MORE ROOMS						
<b>2008</b>						
September Quarter	1 299	55 439	181 181	16 717	3 462.2	67.9
December Quarter	1 300	56 128	182 739	16 633	3 485.2	67.6
<b>2009</b>						
March Quarter	1 312	56 834	184 015	16 218	3 305.9	65.0
June Quarter	1 303	56 798	184 067	16 240	3 096.4	60.1
September Quarter	1 312	57 074	182 232	16 714	3 464.4	66.1
<b>Year ended September 2008</b>	..	..	..	..	13 283.7	67.1
<b>Year ended September 2009</b>	..	..	..	..	13 351.9	64.7
..	not applicable					

SUMMARY OF SERVICED APARTMENTS, Australia *continued*

<i>Period</i>	<i>Guest nights occupied</i> '000	<i>Bed occupancy rate</i> %	<i>Guest arrivals</i> '000	<i>Average length of stay</i> days	<i>Takings from accommodation</i> \$'000
---------------	--	--	-----------------------------------	---	---

## SERVICED APARTMENTS WITH 5 TO 14 ROOMS

<b>2008</b>					
September Quarter	365.3	33.7	134.3	2.7	19 862
December Quarter	383.6	36.0	141.3	2.7	20 972
<b>2009</b>					
March Quarter	390.3	37.1	135.7	2.9	21 094
June Quarter	337.7	31.5	122.8	2.7	17 975
September Quarter	370.2	35.3	131.4	2.8	20 306
<b>Year ended September 2008</b>	<b>1 448.0</b>	<b>34.1</b>	<b>547.6</b>	<b>2.6</b>	<b>77 383</b>
<b>Year ended September 2009</b>	<b>1 481.9</b>	<b>35.0</b>	<b>531.3</b>	<b>2.8</b>	<b>80 348</b>

## SERVICED APARTMENTS WITH 15 OR MORE ROOMS

<b>2008</b>					
September Quarter	6 845.1	44.0	2 084.3	3.3	533 572
December Quarter	7 004.4	44.6	2 193.9	3.2	537 440
<b>2009</b>					
March Quarter	6 642.0	43.2	2 012.7	3.3	510 608
June Quarter	5 992.6	38.4	1 934.6	3.1	455 485
September Quarter	6 872.6	43.8	2 189.1	3.1	526 193
<b>Year ended September 2008</b>	<b>26 384.6</b>	<b>43.7</b>	<b>8 085.7</b>	<b>3.3</b>	<b>2 003 511</b>
<b>Year ended September 2009</b>	<b>26 511.6</b>	<b>42.5</b>	<b>8 330.3</b>	<b>3.2</b>	<b>2 029 725</b>

## SERVICED APARTMENTS WITH 5 OR MORE ROOMS

<b>2008</b>					
September Quarter	7 210.4	43.3	2 218.6	3.3	553 434
December Quarter	7 388.0	44.1	2 335.2	3.2	558 412
<b>2009</b>					
March Quarter	7 032.2	42.8	2 148.4	3.3	531 702
June Quarter	6 330.3	37.9	2 057.4	3.1	473 460
September Quarter	7 242.9	43.2	2 320.5	3.1	546 499
<b>Year ended September 2008</b>	<b>27 832.6</b>	<b>43.0</b>	<b>8 633.4</b>	<b>3.2</b>	<b>2 080 893</b>
<b>Year ended September 2009</b>	<b>27 993.4</b>	<b>42.0</b>	<b>8 861.5</b>	<b>3.2</b>	<b>2 110 073</b>

## SUMMARY OF CARAVAN PARKS(a), Australia

## CAPACITY

<i>Period</i>	<i>Establishments</i>	<i>On-site vans</i>	<i>Other powered sites</i>	<i>Unpowered sites</i>	<i>Cabins, flats units and villas</i>	<i>Total capacity</i>
no.	no.	no.	no.	no.	no.	no.
CARAVAN PARKS, SHORT TERM (b)						
<b>2008</b>						
September Quarter	1 443	13 870	123 196	38 117	27 865	203 048
December Quarter	1 445	13 235	124 486	37 754	28 138	203 613
<b>2009</b>						
March Quarter	1 442	13 244	124 487	37 513	27 828	203 072
June Quarter	1 438	13 577	124 528	37 055	27 692	202 852
September Quarter	1 431	13 111	124 342	35 089	27 674	200 216
<b>Year ended September 2008</b>	..	..	..	..	..	..
<b>Year ended September 2009</b>	..	..	..	..	..	..
CARAVAN PARKS, LONG TERM (b)						
<b>2008</b>						
September Quarter	224	4 183	16 067	1 907	6 908	29 065
December Quarter	223	3 977	16 123	1 845	7 468	29 413
<b>2009</b>						
March Quarter	221	3 878	16 003	1 802	7 229	28 912
June Quarter	217	3 769	15 951	1 634	7 295	28 649
September Quarter	215	3 761	15 685	1 590	7 229	28 265
<b>Year ended September 2008</b>	..	..	..	..	..	..
<b>Year ended September 2009</b>	..	..	..	..	..	..
CARAVAN PARKS, TOTAL						
<b>2008</b>						
September Quarter	1 667	18 053	139 263	40 024	34 773	232 113
December Quarter	1 668	17 212	140 609	39 599	35 606	233 026
<b>2009</b>						
March Quarter	1 663	17 122	140 490	39 315	35 057	231 984
June Quarter	1 655	17 346	140 479	38 689	34 987	231 501
September Quarter	1 646	16 872	140 027	36 679	34 903	228 481
<b>Year ended September 2008</b>	..	..	..	..	..	..
<b>Year ended September 2009</b>	..	..	..	..	..	..

.. not applicable

(a) Comprising establishments with 40 or more powered sites and cabins, flats, units and villas

(b) For definitions of short-term and long-term caravan parks, see Glossary.

SUMMARY OF CARAVAN PARKS(a), Australia *continued*

<i>Period</i>	<i>Persons employed</i>	<i>Sites occupied by long-term guests</i>	<i>Other sites permanently reserved</i>	<i>Site nights occupied</i>	<i>Site occupancy rate</i>	<i>Takings from accommodation</i>
	no.	no.	no.	'000	%	\$'000
<b>CARAVAN PARKS, SHORT TERM (b)</b>						
<b>2008</b>						
September Quarter	9 110	19 178	38 679	9 242.7	49.7	212 042
December Quarter	9 357	19 360	38 850	9 165.9	49.3	227 550
<b>2009</b>						
March Quarter	9 174	19 120	38 689	9 410.7	51.6	240 294
June Quarter	9 163	19 966	37 229	9 101.9	49.8	213 016
September Quarter	9 109	19 920	37 634	9 404.2	51.6	233 777
<b>Year ended September 2008</b>	. .	. .	. .	36 658.7	49.3	849 045
<b>Year ended September 2009</b>	. .	. .	. .	37 082.8	50.6	914 637

<b>CARAVAN PARKS, LONG TERM (b)</b>						
<b>2008</b>						
September Quarter	1 385	15 514	2 014	2 025.4	75.8	42 903
December Quarter	1 377	15 691	2 037	2 080.4	77.0	45 647
<b>2009</b>						
March Quarter	1 398	15 433	1 909	1 991.2	76.5	44 528
June Quarter	1 334	15 416	1 917	1 952.2	74.9	41 456
September Quarter	1 349	15 030	1 960	1 953.4	75.1	44 684
<b>Year ended September 2008</b>	. .	. .	. .	8 266.7	76.9	172 481
<b>Year ended September 2009</b>	. .	. .	. .	7 977.3	75.9	176 316

<b>CARAVAN PARKS, TOTAL</b>						
<b>2008</b>						
September Quarter	10 495	34 692	40 693	11 268.1	53.0	254 945
December Quarter	10 734	35 051	40 887	11 246.3	52.8	273 197
<b>2009</b>						
March Quarter	10 572	34 553	40 598	11 402.0	54.7	284 822
June Quarter	10 497	35 382	39 146	11 054.1	52.9	254 472
September Quarter	10 458	34 950	39 594	11 357.7	54.6	278 461
<b>Year ended September 2008</b>	. .	. .	. .	44 925.5	52.8	1 021 525
<b>Year ended September 2009</b>	. .	. .	. .	45 060.1	53.7	1 090 953

. . not applicable

(a) Comprising establishments with 40 or more powered sites and cabins, flats, units and villas

(b) For definitions of short-term and long-term caravan parks, see Glossary.

## SUMMARY OF HOLIDAY FLATS, UNITS AND HOUSES, Australia

## CAPACITY

<i>Period</i>	<i>Letting entities(a)</i>	<i>Single bedroom</i>	<i>Multiple bedroom</i>	<i>Total</i>	<i>Bed spaces</i>	<i>Persons employed(b)</i>
<i>no.</i>	<i>no.</i>	<i>no.</i>	<i>no.</i>	<i>no.</i>	<i>no.</i>	<i>no.</i>

## REAL ESTATE AGENTS

<b>2008</b>						
September Quarter	158	609	13 004	13 613	75 318	..
December Quarter	157	664	13 298	13 962	75 924	..
<b>2009</b>						
March Quarter	157	736	13 346	14 082	77 959	..
June Quarter	156	589	13 198	13 787	77 203	..
September Quarter	155	600	13 045	13 645	77 035	..
<b>Year ended September 2008</b>	..	..	..	..	..	..
<b>Year ended September 2009</b>	..	..	..	..	..	..

## OTHER LETTING ENTITIES

<b>2008</b>						
September Quarter	428	4 189	10 887	15 076	61 672	2 526
December Quarter	433	4 190	11 022	15 212	61 850	2 648
<b>2009</b>						
March Quarter	432	4 366	10 876	15 242	62 748	2 665
June Quarter	431	4 274	10 971	15 245	62 310	2 625
September Quarter	424	4 242	10 948	15 190	61 925	2 644
<b>Year ended September 2008</b>	..	..	..	..	..	..
<b>Year ended September 2009</b>	..	..	..	..	..	..

## HOLIDAY FLATS AND UNITS

<b>2008</b>						
September Quarter	586	4 798	23 891	28 689	136 990	..
December Quarter	590	4 854	24 320	29 174	137 774	..
<b>2009</b>						
March Quarter	589	5 102	24 222	29 324	140 707	..
June Quarter	587	4 863	24 169	29 032	139 513	..
September Quarter	579	4 842	23 993	28 835	138 960	..
<b>Year ended September 2008</b>	..	..	..	..	..	..
<b>Year ended September 2009</b>	..	..	..	..	..	..

.. not applicable

(a) The number of owners, managers or real estate agents with 15 or more self-contained units

(b) Employment numbers exclude real estate agents and their employees

<i>Period</i>	<i>Unit nights occupied</i> '000	<i>Unit occupancy rate</i> %	<i>Unit lettings</i> '000	<i>Average length of stay</i> days	<i>Takings from accommodation</i> \$'000
<b>REAL ESTATE AGENTS</b>					
<b>2008</b>					
September Quarter	332.8	26.6	54.2	6.1	33 983
December Quarter	406.7	31.7	82.6	4.9	50 726
<b>2009</b>					
March Quarter	458.5	36.2	81.1	5.7	55 063
June Quarter	287.0	22.9	54.2	5.3	27 587
September Quarter	324.4	25.8	58.2	5.6	35 936
<b>Year ended September 2008</b>	1 491.7	29.9	275.4	5.4	160 484
<b>Year ended September 2009</b>	1 476.6	29.2	276.1	5.3	169 313
<b>OTHER LETTING ENTITIES</b>					
<b>2008</b>					
September Quarter	889.7	64.2	305.5	2.9	117 233
December Quarter	898.9	64.6	351.8	2.6	129 322
<b>2009</b>					
March Quarter	846.8	62.0	320.7	2.6	119 791
June Quarter	736.4	53.4	279.5	2.6	92 258
September Quarter	871.2	62.4	321.9	2.7	118 212
<b>Year ended September 2008</b>	3 473.5	62.6	1 269.3	2.7	459 096
<b>Year ended September 2009</b>	3 353.3	60.6	1 273.9	2.6	459 582
<b>HOLIDAY FLATS AND UNITS</b>					
<b>2008</b>					
September Quarter	1 222.5	46.3	359.7	3.4	151 216
December Quarter	1 305.6	48.8	434.4	3.0	180 048
<b>2009</b>					
March Quarter	1 305.3	49.6	401.8	3.2	174 854
June Quarter	1 023.4	38.9	333.7	3.1	119 845
September Quarter	1 195.5	45.1	380.1	3.1	154 148
<b>Year ended September 2008</b>	4 965.2	47.2	1 544.6	3.2	619 580
<b>Year ended September 2009</b>	4 829.8	45.6	1 549.9	3.1	628 895

## SUMMARY OF VISITOR HOSTELS(a), Australia

<i>Period</i>	<i>Establishments</i>	<i>Bed spaces</i>	<i>Persons employed</i>	<i>Guest arrivals</i>	<i>Guest nights occupied</i>	<i>Bed occupancy rate</i>	<i>Average length of stay</i>	<i>Takings from accommodation</i>
	no.	no.	no.	no.	no.	%	days	\$'000
<b>2008</b>								
September Quarter	413	46 175	3 394	763 615	2 214 908	52.2	2.9	59 754
December Quarter	407	45 921	3 385	757 660	2 373 677	56.5	3.1	63 373
<b>2009</b>								
March Quarter	406	45 847	3 396	796 892	2 426 755	59.2	3.0	66 519
June Quarter	404	45 728	3 322	716 569	2 075 288	50.1	2.9	56 439
September Quarter	400	46 398	3 341	716 024	2 036 350	47.9	2.8	54 443
<b>Year ended September 2008</b>	..	..	..	3 087 508	9 005 165	53.0	2.9	235 060
<b>Year ended September 2009</b>	..	..	..	2 987 145	8 912 070	53.4	3.0	240 774

.. not applicable

(a) Comprising establishments with 25 or more bed spaces.



	STAR GRADING						
Period	1	2	3	4	5	Ungraded	Total
ESTABLISHMENTS, CAPACITY AND EMPLOYMENT (no.)							
September Quarter 2008							
Establishments	75	294	862	380	22	271	1 904
Rooms	717	2 867	8 878	3 175	186	2 524	18 347
Bed spaces	1 792	8 227	26 420	9 721	457	7 253	53 870
Persons employed	950	2 327	3 813	1 445	214	2 581	11 330
September Quarter 2009							
Establishments	66	282	842	362	22	249	1 823
Rooms	651	2 747	8 699	2 999	193	2 322	17 611
Bed spaces	1 550	7 820	25 715	9 348	542	6 846	51 821
Persons employed	856	2 225	3 818	1 412	147	2 277	10 735
ROOM NIGHTS OCCUPIED ('000)							
2008							
September Quarter	20.8	101.7	396.5	135.6	6.3	93.4	754.3
2009							
July	6.0	31.7	129.5	45.7	2.5	29.5	244.9
August	5.7	30.6	125.3	44.1	2.1	29.0	236.8
September	6.3	32.5	132.5	44.9	2.2	29.4	247.8
September Quarter	18.1	94.8	387.3	134.7	6.7	87.9	729.5
ROOM OCCUPANCY RATE (%)							
2008							
September Quarter	31.6	38.5	48.8	47.0	36.7	40.3	44.9
2009							
July	29.8	37.3	48.0	49.6	41.2	41.2	45.0
August	28.4	36.0	46.5	47.9	35.3	40.4	43.5
September	32.4	39.6	50.9	50.1	37.4	42.3	47.0
September Quarter	30.2	37.6	48.4	49.2	38.0	41.3	45.1
GUEST NIGHTS OCCUPIED ('000)							
2008							
September Quarter	29.0	164.8	703.1	298.6	12.2	171.9	1 379.6
2009							
July	8.8	51.9	237.4	103.4	5.4	54.0	460.9
August	8.0	49.4	220.8	94.7	4.6	51.4	428.8
September	9.3	54.0	239.2	101.6	4.8	51.4	460.5
September Quarter	26.1	155.3	697.5	299.8	14.8	156.8	1 350.1
BED OCCUPANCY RATE (%)							
2008							
September Quarter	17.6	21.8	29.1	33.7	29.0	25.8	28.0
2009							
July	18.3	21.5	29.8	35.9	31.9	25.6	28.8
August	16.6	20.4	27.7	32.9	27.2	24.3	26.8
September	20.1	23.2	31.1	36.4	29.8	25.0	29.7
September Quarter	18.3	21.7	29.5	35.1	29.6	25.0	28.4

	STAR GRADING						
Period	1	2	3	4	5	Ungraded	Total
GUEST ARRIVALS ('000)							
2008							
September Quarter	16.2	97.8	417.4	125.0	6.8	85.8	748.9
2009							
July	5.1	29.6	134.8	41.1	2.3	27.6	240.5
August	5.0	29.0	126.4	38.7	2.0	26.7	227.9
September	5.8	30.6	137.5	42.0	2.3	26.5	244.6
September Quarter	15.9	89.2	398.7	121.8	6.6	80.8	713.0
AVERAGE LENGTH OF STAY (days)							
2008							
September Quarter	1.8	1.7	1.7	2.4	1.8	2.0	1.8
2009							
July	1.7	1.8	1.8	2.5	2.3	2.0	1.9
August	1.6	1.7	1.7	2.4	2.3	1.9	1.9
September	1.6	1.8	1.7	2.4	2.1	1.9	1.9
September Quarter	1.6	1.7	1.7	2.5	2.2	1.9	1.9
TAKINGS FROM ACCOMMODATION (\$'000)							
2008							
September Quarter	1 163	7 149	36 125	20 895	1 541	9 981	76 854
2009							
July	379	2 282	12 469	7 054	596	3 225	26 004
August	378	2 232	11 932	6 818	560	3 140	25 060
September	421	2 375	12 521	6 912	570	2 849	25 648
September Quarter	1 177	6 890	36 922	20 783	1 726	9 214	76 712
AVERAGE TAKINGS PER ROOM NIGHT OCCUPIED (\$)							
2008							
September Quarter	55.84	70.32	91.11	154.13	245.39	106.83	101.89
2009							
July	62.92	72.07	96.29	154.25	241.61	109.35	106.20
August	65.80	72.91	95.21	154.63	265.43	108.42	105.81
September	66.59	73.15	94.49	153.87	262.94	96.80	103.49
September Quarter	65.11	72.71	95.33	154.25	255.93	104.84	105.15
AVERAGE TAKINGS PER ROOM NIGHT AVAILABLE (\$)							
2008							
September Quarter	17.63	27.10	44.44	72.52	90.06	43.09	45.76
2009							
July	18.76	26.90	46.23	76.55	99.54	45.01	47.75
August	18.71	26.27	44.25	74.03	93.65	43.83	46.02
September	21.57	28.97	48.09	77.11	98.46	40.91	48.67
September Quarter	19.66	27.36	46.17	75.88	97.20	43.28	47.47

## STAR GRADING

Period	1	2	3	4	5	Ungraded	Total
--------	---	---	---	---	---	----------	-------

## ESTABLISHMENTS, CAPACITY AND EMPLOYMENT (no.)

## September Quarter 2008

Establishments	49	284	2 147	1 459	120	208	4 267
Rooms	1 453	8 977	77 001	103 892	24 516	6 427	222 266
Bed spaces	4 869	25 614	223 732	299 944	62 392	17 844	634 395
Persons employed	528	3 333	25 832	50 031	34 036	3 239	116 999

## September Quarter 2009

Establishments	44	288	2 199	1 440	123	207	4 301
Rooms	1 376	9 086	79 291	105 271	24 724	6 126	225 874
Bed spaces	4 443	25 906	228 420	299 880	62 926	16 552	638 127
Persons employed	515	3 330	25 768	47 282	31 308	3 170	111 373

## ROOM NIGHTS OCCUPIED ('000)

## 2008

September Quarter	54.0	435.2	4 176.5	6 644.6	1 644.5	318.8	13 273.6
-------------------	------	-------	---------	---------	---------	-------	----------

## 2009

July	18.0	139.0	1 359.0	2 184.8	542.0	97.8	4 340.6
August	18.7	138.8	1 337.1	2 180.1	573.2	98.1	4 346.1
September	14.4	139.6	1 399.4	2 211.8	558.6	96.0	4 419.8
September Quarter	51.1	417.4	4 095.4	6 576.8	1 673.9	291.9	13 106.5

## ROOM OCCUPANCY RATE (%)

## 2008

September Quarter	40.7	52.8	59.0	69.6	72.9	53.9	65.0
-------------------	------	------	------	------	------	------	------

## 2009

July	44.3	49.6	55.3	67.1	70.7	51.5	62.1
August	46.1	49.5	54.4	66.9	74.8	51.7	62.1
September	34.9	51.4	58.9	70.0	75.3	52.2	65.3
September Quarter	41.7	50.1	56.2	68.0	73.6	51.8	63.1

## GUEST NIGHTS OCCUPIED ('000)

## 2008

September Quarter	128.1	771.9	7 419.6	11 745.7	2 579.0	532.4	23 176.8
-------------------	-------	-------	---------	----------	---------	-------	----------

## 2009

July	45.5	256.8	2 504.8	4 019.4	902.5	170.9	7 899.9
August	45.6	248.9	2 341.8	3 785.4	923.6	162.7	7 508.1
September	29.7	249.4	2 496.2	3 965.4	908.4	160.4	7 809.6
September Quarter	120.9	755.1	7 342.7	11 770.1	2 734.5	494.1	23 217.5

## BED OCCUPANCY RATE (%)

## 2008

September Quarter	28.7	32.8	36.1	42.6	44.9	32.4	39.7
-------------------	------	------	------	------	------	------	------

## 2009

July	35.5	32.1	35.4	43.3	46.3	33.3	40.0
August	35.5	31.1	33.1	40.8	47.3	31.7	38.0
September	22.3	32.3	36.5	44.1	48.1	32.3	40.8
September Quarter	31.0	31.8	35.0	42.7	47.2	32.4	39.6

	STAR GRADING						
Period	1	2	3	4	5	Ungraded	Total
GUEST ARRIVALS ('000)							
2008							
September Quarter	54.6	416.8	3 699.6	4 805.6	1 054.4	212.8	10 243.9
2009							
July	15.4	137.7	1 243.6	1 638.6	367.0	68.3	3 470.6
August	15.3	136.2	1 179.4	1 595.5	381.3	66.7	3 374.5
September	13.3	133.3	1 249.6	1 633.3	373.7	66.7	3 469.9
September Quarter	44.1	407.2	3 672.5	4 867.4	1 122.0	201.7	10 315.0
AVERAGE LENGTH OF STAY (days)							
2008							
September Quarter	2.3	1.9	2.0	2.4	2.4	2.5	2.3
2009							
July	3.0	1.9	2.0	2.5	2.5	2.5	2.3
August	3.0	1.8	2.0	2.4	2.4	2.4	2.2
September	2.2	1.9	2.0	2.4	2.4	2.4	2.3
September Quarter	2.7	1.9	2.0	2.4	2.4	2.4	2.3
TAKINGS FROM ACCOMMODATION (\$'000)							
2008							
September Quarter	5 307	38 335	462 594	1 075 714	391 492	41 310	2 014 752
2009							
July	1 928	12 402	154 682	335 928	120 150	14 227	639 318
August	2 000	12 383	150 368	336 081	128 441	13 722	642 996
September	1 240	12 187	153 607	344 159	125 108	11 998	648 300
September Quarter	5 169	36 972	458 658	1 016 169	373 700	39 947	1 930 613
AVERAGE TAKINGS PER ROOM NIGHT OCCUPIED (\$)							
2008							
September Quarter	98.31	88.08	110.76	161.89	238.06	129.58	151.79
2009							
July	107.28	89.22	113.82	153.75	221.68	145.51	147.29
August	107.03	89.20	112.46	154.16	224.06	139.85	147.95
September	85.95	87.33	109.77	155.60	223.95	124.95	146.68
September Quarter	101.17	88.58	111.99	154.51	223.25	136.85	147.30
AVERAGE TAKINGS PER ROOM NIGHT AVAILABLE (\$)							
2008							
September Quarter	39.98	46.46	65.37	112.63	173.60	69.86	98.61
2009							
July	47.56	44.21	62.97	103.12	156.76	74.92	91.44
August	49.33	44.14	61.17	103.13	167.58	72.26	91.93
September	30.04	44.92	64.62	108.99	168.67	65.28	95.72
September Quarter	42.24	44.42	62.90	105.04	164.29	70.88	93.00

## STAR GRADING

Period	1	2	3	4	5	Ungraded	Total
--------	---	---	---	---	---	----------	-------

## ESTABLISHMENTS, CAPACITY AND EMPLOYMENT (no.)

## September Quarter 2008

Establishments	124	578	3 009	1 839	142	479	6 171
Rooms	2 170	11 844	85 879	107 067	24 702	8 951	240 613
Bed spaces	6 661	33 841	250 152	309 665	62 849	25 097	688 265
Persons employed	1 478	5 660	29 645	51 476	34 250	5 820	128 329

## September Quarter 2009

Establishments	110	570	3 041	1 802	145	456	6 124
Rooms	2 027	11 833	87 990	108 270	24 917	8 448	243 485
Bed spaces	5 993	33 726	254 135	309 228	63 468	23 398	689 948
Persons employed	1 371	5 555	29 586	48 694	31 455	5 447	122 108

## ROOM NIGHTS OCCUPIED ('000)

## 2008

September Quarter	74.8	536.9	4 573.0	6 780.1	1 650.8	412.2	14 027.8
-------------------	------	-------	---------	---------	---------	-------	----------

## 2009

July	24.0	170.7	1 488.5	2 230.6	544.5	127.3	4 585.4
August	24.4	169.4	1 462.4	2 224.2	575.3	127.1	4 582.9
September	20.8	172.0	1 531.9	2 256.7	560.8	125.5	4 667.6
September Quarter	69.2	512.1	4 482.8	6 711.5	1 680.6	379.8	13 836.0

## ROOM OCCUPANCY RATE (%)

## 2008

September Quarter	37.7	49.3	58.0	68.9	72.6	50.1	63.4
-------------------	------	------	------	------	------	------	------

## 2009

July	39.5	46.7	54.6	66.6	70.5	48.7	60.8
August	40.2	46.4	53.6	66.4	74.5	48.6	60.8
September	34.1	48.7	58.1	69.5	75.0	49.5	63.9
September Quarter	38.0	47.2	55.4	67.5	73.3	48.9	61.8

## GUEST NIGHTS OCCUPIED ('000)

## 2008

September Quarter	157.1	936.7	8 122.7	12 044.3	2 591.2	704.3	24 556.4
-------------------	-------	-------	---------	----------	---------	-------	----------

## 2009

July	54.3	308.7	2 742.2	4 122.8	907.8	224.9	8 360.7
August	53.6	298.3	2 562.6	3 880.1	928.2	214.1	7 936.8
September	39.1	303.4	2 735.4	4 067.0	913.3	211.9	8 270.0
September Quarter	147.0	910.4	8 040.2	12 069.9	2 749.3	650.8	24 567.6

## BED OCCUPANCY RATE (%)

## 2008

September Quarter	25.7	30.1	35.3	42.3	44.8	30.5	38.8
-------------------	------	------	------	------	------	------	------

## 2009

July	30.8	29.7	34.8	43.1	46.1	31.1	39.2
August	30.4	28.7	32.5	40.5	47.2	29.5	37.2
September	21.7	30.2	35.9	43.9	48.0	30.2	40.0
September Quarter	27.6	29.5	34.4	42.5	47.1	30.3	38.8

	STAR GRADING						
Period	1	2	3	4	5	Ungraded	Total
GUEST ARRIVALS ('000)							
2008							
September Quarter	70.8	514.6	4 117.0	4 930.6	1 061.1	298.6	10 992.8
2009							
July	20.5	167.3	1 378.4	1 679.7	369.4	95.9	3 711.1
August	20.4	165.2	1 305.8	1 634.2	383.3	93.4	3 602.4
September	19.1	163.9	1 387.1	1 675.3	376.0	93.1	3 714.5
September Quarter	60.0	496.4	4 071.2	4 989.2	1 128.6	282.5	11 028.0
AVERAGE LENGTH OF STAY (days)							
2008							
September Quarter	2.2	1.8	2.0	2.4	2.4	2.4	2.2
2009							
July	2.6	1.8	2.0	2.5	2.5	2.3	2.3
August	2.6	1.8	2.0	2.4	2.4	2.3	2.2
September	2.0	1.9	2.0	2.4	2.4	2.3	2.2
September Quarter	2.5	1.8	2.0	2.4	2.4	2.3	2.2
TAKINGS FROM ACCOMMODATION (\$'000)							
2008							
September Quarter	6 471	45 483	498 719	1 096 608	393 033	51 291	2 091 606
2009							
July	2 307	14 684	167 152	342 982	120 746	17 452	665 322
August	2 378	14 615	162 300	342 899	129 001	16 863	668 056
September	1 661	14 562	166 128	351 071	125 678	14 847	673 948
September Quarter	6 346	43 861	495 580	1 036 951	375 425	49 161	2 007 325
AVERAGE TAKINGS PER ROOM NIGHT OCCUPIED (\$)							
2008							
September Quarter	86.49	84.71	109.06	161.74	238.09	124.42	149.10
2009							
July	96.16	86.04	112.30	153.76	221.77	137.13	145.09
August	97.34	86.26	110.98	154.16	224.22	132.69	145.77
September	80.05	84.65	108.45	155.57	224.10	118.35	144.39
September Quarter	91.74	85.65	110.55	154.50	223.39	129.44	145.08
AVERAGE TAKINGS PER ROOM NIGHT AVAILABLE (\$)							
2008							
September Quarter	32.56	41.77	63.21	111.46	172.97	62.33	94.60
2009							
July	37.99	40.19	61.31	102.39	156.32	66.73	88.29
August	39.15	39.99	59.50	102.33	167.01	64.47	88.62
September	27.32	41.22	62.99	108.11	168.13	58.59	92.33
September Quarter	34.82	40.46	61.25	104.24	163.77	63.31	89.71

Period	New South Wales	Victoria	Queensland	South Australia	Western Australia	Tasmania	Northern Territory	Australian Capital Territory	Australia
ESTABLISHMENTS (no.)									
<b>2008</b>									
September Quarter	606	455	419	141	143	121	16	3	1 904
December Quarter	603	449	413	141	139	122	16	3	1 886
<b>2009</b>									
March Quarter	597	443	409	136	143	121	14	3	1 866
June Quarter	591	430	407	134	135	118	15	4	1 834
September Quarter	592	420	409	132	134	118	15	3	1 823
ROOMS (no.)									
<b>2008</b>									
September Quarter	6 010	4 416	4 155	1 341	1 221	1 021	153	30	18 347
December Quarter	5 970	4 369	4 065	1 356	1 194	1 032	151	30	18 167
<b>2009</b>									
March Quarter	5 924	4 288	4 034	1 281	1 238	1 024	np	np	17 956
June Quarter	5 868	4 183	4 034	1 259	1 168	998	142	41	17 693
September Quarter	5 895	4 087	4 060	1 254	1 136	1 006	143	30	17 611
BED SPACES (no.)									
<b>2008</b>									
September Quarter	17 383	12 743	13 065	3 482	3 860	2 818	434	85	53 870
December Quarter	17 306	12 500	12 866	3 558	3 800	2 863	430	85	53 408
<b>2009</b>									
March Quarter	17 212	12 320	12 737	3 410	3 972	2 782	np	np	52 896
June Quarter	17 119	12 164	12 766	3 376	3 715	2 756	387	118	52 401
September Quarter	16 993	11 808	12 718	3 375	3 678	2 757	407	85	51 821
PERSONS EMPLOYED (no.)									
<b>2008</b>									
September Quarter	3 004	2 529	2 101	1 845	949	800	82	20	11 330
December Quarter	2 938	2 535	2 025	1 870	902	829	76	18	11 193
<b>2009</b>									
March Quarter	2 797	2 447	1 949	1 677	866	779	np	np	10 588
June Quarter	2 736	2 450	2 016	1 642	814	758	63	48	10 527
September Quarter	2 852	2 446	2 142	1 651	826	739	60	19	10 735
ROOM NIGHTS OCCUPIED ('000)									
<b>2008</b>									
September Quarter	234.2	154.4	227.4	45.8	53.4	30.6	7.0	1.6	754.3
December Quarter	243.7	174.0	204.6	52.0	53.7	44.6	5.4	1.7	779.7
<b>2009</b>									
March Quarter	240.5	169.4	179.0	48.8	50.2	55.5	np	np	748.7
June Quarter	230.5	152.0	192.1	44.9	48.0	34.2	4.7	1.9	708.2
September Quarter	240.9	144.8	216.1	44.2	47.5	28.7	5.8	1.5	729.5
ROOM OCCUPANCY RATE (%)									
<b>2008</b>									
September Quarter	42.6	38.2	59.5	37.4	48.0	32.9	49.4	57.5	44.9
December Quarter	45.3	43.5	55.0	41.9	50.0	47.3	39.1	60.5	47.2
<b>2009</b>									
March Quarter	46.1	45.1	49.8	42.8	46.5	60.9	np	np	47.2
June Quarter	43.6	40.4	52.5	39.2	45.9	38.4	36.4	49.8	44.4
September Quarter	44.5	38.6	58.0	38.3	45.5	31.3	43.7	53.6	45.1

np not available for publication but included in totals where applicable, unless otherwise indicated

Period	New South Wales	Victoria	Queensland	South Australia	Western Australia	Tasmania	Northern Territory	Australian Capital Territory	Australia
GUEST NIGHTS OCCUPIED ('000)									
<b>2008</b>									
September Quarter	428.3	280.7	421.9	73.4	106.6	55.4	11.3	2.1	1 379.6
December Quarter	447.0	317.6	389.8	86.1	115.4	87.2	8.0	2.1	1 453.3
<b>2009</b>									
March Quarter	451.3	318.9	341.6	82.4	109.0	111.0	np	np	1 422.4
June Quarter	407.2	273.1	355.6	72.6	102.4	64.4	8.4	2.3	1 285.9
September Quarter	434.9	265.4	409.8	75.1	100.6	52.2	9.9	2.1	1 350.1
BED OCCUPANCY RATE (%)									
<b>2008</b>									
September Quarter	26.9	24.1	35.1	23.1	30.3	21.6	28.3	26.3	28.0
December Quarter	28.7	27.8	33.1	26.4	33.5	33.3	20.3	27.0	29.9
<b>2009</b>									
March Quarter	29.9	29.7	30.1	27.2	31.2	44.8	np	np	30.5
June Quarter	26.5	25.0	30.8	23.6	30.7	26.2	23.8	21.3	27.3
September Quarter	27.9	24.5	35.1	24.2	29.7	20.7	26.5	27.1	28.4
GUEST ARRIVALS ('000)									
<b>2008</b>									
September Quarter	244.3	172.7	202.0	42.5	46.3	32.8	7.0	1.3	748.9
December Quarter	256.2	197.8	182.1	49.5	51.4	49.9	5.1	1.4	793.5
<b>2009</b>									
March Quarter	242.0	186.1	155.9	44.8	43.5	62.6	np	np	740.5
June Quarter	228.1	159.4	173.7	40.5	41.1	36.4	5.5	1.5	686.1
September Quarter	241.0	154.1	197.6	41.6	41.6	29.8	6.2	1.1	713.0
AVERAGE LENGTH OF STAY (days)									
<b>2008</b>									
September Quarter	1.8	1.6	2.1	1.7	2.3	1.7	1.6	1.6	1.8
December Quarter	1.7	1.6	2.1	1.7	2.2	1.7	1.6	1.5	1.8
<b>2009</b>									
March Quarter	1.9	1.7	2.2	1.8	2.5	1.8	np	np	1.9
June Quarter	1.8	1.7	2.0	1.8	2.5	1.8	1.5	1.5	1.9
September Quarter	1.8	1.7	2.1	1.8	2.4	1.8	1.6	1.9	1.9
TAKINGS FROM ACCOMMODATION (\$'000)									
<b>2008</b>									
September Quarter	24 230	15 540	21 536	3 797	7 055	3 335	1 244	117	76 854
December Quarter	24 289	18 158	19 657	4 535	7 610	5 275	963	123	80 610
<b>2009</b>									
March Quarter	25 323	17 730	17 211	4 327	7 242	6 913	np	np	79 626
June Quarter	22 568	15 174	18 301	3 904	6 858	4 129	968	154	72 054
September Quarter	25 018	15 196	20 966	3 918	6 877	3 311	1 305	120	76 712
AVERAGE TAKINGS PER ROOM NIGHT OCCUPIED (\$)									
<b>2008</b>									
September Quarter	103.45	100.67	94.73	82.89	132.10	109.10	178.85	73.73	101.89
December Quarter	99.65	104.33	96.09	87.25	141.63	118.36	177.17	73.43	103.38
<b>2009</b>									
March Quarter	105.28	104.66	96.14	88.73	144.13	124.47	np	np	106.36
June Quarter	97.91	99.83	95.28	86.98	142.97	120.76	205.90	82.59	101.75
September Quarter	103.87	104.92	97.00	88.62	144.74	115.22	227.04	81.28	105.15

np not available for publication but included in totals where applicable, unless otherwise indicated



<i>Period</i>	<i>New South Wales</i>	<i>Victoria</i>	<i>Queensland</i>	<i>South Australia</i>	<i>Western Australia</i>	<i>Tasmania</i>	<i>Northern Territory</i>	<i>Australian Capital Territory</i>	<i>Australia</i>
AVERAGE TAKINGS PER ROOM NIGHT AVAILABLE (\$)									
<b>2008</b>									
September Quarter	44.09	38.43	56.34	31.03	63.36	35.90	88.38	42.40	45.76
December Quarter	45.17	45.34	52.88	36.58	70.79	55.95	69.30	44.46	48.78
<b>2009</b>									
March Quarter	48.54	47.16	47.90	37.98	67.07	75.76	np	np	50.24
June Quarter	42.67	40.28	50.00	34.07	65.68	46.33	74.89	41.15	45.14
September Quarter	46.25	40.54	56.25	33.96	65.80	36.09	99.23	43.53	47.47

np not available for publication but included in totals where applicable, unless otherwise indicated

<i>Period</i>	<i>New South Wales</i>	<i>Victoria</i>	<i>Queensland</i>	<i>South Australia</i>	<i>Western Australia</i>	<i>Tasmania</i>	<i>Northern Territory</i>	<i>Australian Capital Territory</i>	<i>Australia</i>
ESTABLISHMENTS (no.)									
<b>2008</b>									
September Quarter	1 434	801	1 117	257	352	155	95	56	4 267
December Quarter	1 432	800	1 131	258	351	154	95	56	4 277
<b>2009</b>									
March Quarter	1 428	813	1 138	263	352	153	98	56	4 301
June Quarter	1 422	813	1 135	262	351	156	97	56	4 292
September Quarter	1 416	819	1 143	262	353	155	97	56	4 301
ROOMS (no.)									
<b>2008</b>									
September Quarter	71 025	38 466	60 655	11 831	21 527	6 583	7 025	5 154	222 266
December Quarter	70 989	38 666	61 521	11 860	21 568	6 579	7 015	5 121	223 319
<b>2009</b>									
March Quarter	71 466	39 439	62 041	12 069	21 634	6 614	7 411	5 059	225 733
June Quarter	71 229	39 548	61 876	12 086	21 718	6 660	7 359	5 105	225 581
September Quarter	70 990	40 189	61 612	12 060	21 955	6 621	7 347	5 100	225 874
BED SPACES (no.)									
<b>2008</b>									
September Quarter	196 503	105 296	188 168	32 414	57 990	18 453	20 435	15 136	634 395
December Quarter	196 431	106 231	190 175	32 476	57 936	18 513	20 378	15 007	637 147
<b>2009</b>									
March Quarter	198 519	107 016	191 979	32 973	57 831	18 528	20 701	14 844	642 391
June Quarter	197 480	107 573	191 513	33 134	57 602	18 593	21 025	15 057	641 977
September Quarter	195 811	108 050	188 620	33 012	58 507	18 603	21 027	14 497	638 127
PERSONS EMPLOYED (no.)									
<b>2008</b>									
September Quarter	33 670	21 903	32 473	7 290	11 189	4 640	3 253	2 581	116 999
December Quarter	32 936	21 855	31 022	7 002	10 921	4 696	3 037	2 467	113 936
<b>2009</b>									
March Quarter	31 759	21 922	30 017	7 152	10 715	4 842	3 209	2 523	112 139
June Quarter	31 550	21 302	29 693	6 933	10 471	4 660	3 190	2 327	110 126
September Quarter	31 400	21 775	30 115	6 997	10 717	4 558	3 335	2 476	111 373
ROOM NIGHTS OCCUPIED ('000)									
<b>2008</b>									
September Quarter	4 045.5	2 216.6	3 873.6	665.6	1 353.2	286.1	505.3	327.8	13 273.6
December Quarter	4 117.3	2 289.9	3 703.3	701.9	1 365.4	388.5	387.6	322.9	13 276.8
<b>2009</b>									
March Quarter	4 015.1	2 274.8	3 246.4	678.7	1 318.5	446.9	321.8	321.2	12 623.6
June Quarter	3 704.6	2 119.0	3 243.1	655.8	1 253.4	333.1	442.3	311.6	12 063.0
September Quarter	3 997.5	2 181.0	3 810.6	679.9	1 287.5	306.9	502.5	340.6	13 106.5
<b>Year ended September 2008</b>	16 227.0	8 985.2	14 365.5	2 728.7	5 415.1	1 441.7	1 637.8	1 287.2	52 088.2
<b>Year ended September 2009</b>	15 834.6	8 864.7	14 003.4	2 716.3	5 224.8	1 475.5	1 654.2	1 296.3	51 069.9

Period	New South Wales	Victoria	Queensland	South Australia	Western Australia	Tasmania	Northern Territory	Australian Capital Territory	Australia
ROOM OCCUPANCY RATE (%)									
<b>2008</b>									
September Quarter	61.9	62.7	69.6	61.1	68.4	47.2	78.2	69.1	65.0
December Quarter	63.9	65.4	65.5	64.4	68.8	64.2	60.2	68.8	65.1
<b>2009</b>									
March Quarter	63.5	65.5	58.3	62.5	68.1	75.1	49.7	70.6	62.9
June Quarter	57.7	59.7	57.6	59.6	63.4	55.1	66.3	67.5	59.1
September Quarter	61.3	59.1	67.3	61.3	63.7	50.4	74.3	72.6	63.1
<b>Year ended September 2008</b>	63.2	64.7	65.2	63.3	69.0	59.8	66.8	69.6	64.8
<b>Year ended September 2009</b>	61.6	62.3	62.2	62.0	66.0	61.1	62.8	69.8	62.6
GUEST NIGHTS OCCUPIED ('000)									
<b>2008</b>									
September Quarter	6 943.4	3 716.5	7 407.7	1 050.0	2 156.7	508.5	852.2	541.9	23 176.8
December Quarter	7 145.1	3 828.7	7 209.8	1 136.2	2 252.3	711.0	634.4	535.7	23 453.1
<b>2009</b>									
March Quarter	7 089.5	3 883.4	6 323.8	1 121.0	2 196.9	853.7	515.9	510.8	22 495.0
June Quarter	6 302.7	3 589.9	6 069.0	1 051.5	2 032.7	603.8	725.1	499.9	20 874.5
September Quarter	6 974.4	3 768.3	7 307.8	1 087.2	2 081.1	544.7	883.9	570.1	23 217.5
<b>Year ended September 2008</b>	27 677.4	14 993.2	27 585.6	4 354.0	8 796.6	2 640.3	2 728.8	2 084.9	90 860.8
<b>Year ended September 2009</b>	27 511.6	15 070.3	26 910.3	4 395.8	8 562.9	2 713.2	2 759.3	2 116.6	90 040.1
BED OCCUPANCY RATE (%)									
<b>2008</b>									
September Quarter	38.4	38.4	42.9	35.2	40.5	30.0	45.3	38.9	39.7
December Quarter	40.2	40.1	41.2	38.1	42.3	41.7	33.9	38.9	40.4
<b>2009</b>									
March Quarter	40.6	41.6	36.7	37.8	42.5	51.2	28.4	38.2	39.5
June Quarter	35.5	37.5	34.8	34.9	38.8	35.7	38.0	36.7	36.0
September Quarter	38.8	38.0	42.2	35.8	38.7	31.8	45.7	42.7	39.6
<b>Year ended September 2008</b>	38.9	39.5	40.5	37.0	41.6	38.8	37.4	38.4	39.6
<b>Year ended September 2009</b>	38.8	39.3	38.7	36.6	40.5	40.1	36.7	39.1	38.9
GUEST ARRIVALS ('000)									
<b>2008</b>									
September Quarter	3 372.6	1 753.1	2 761.6	536.7	902.9	262.6	392.7	261.6	10 243.9
December Quarter	3 442.3	1 843.7	2 675.8	572.6	921.1	373.7	305.7	244.2	10 379.1
<b>2009</b>									
March Quarter	3 283.8	1 773.5	2 318.6	548.8	861.2	440.3	250.9	236.5	9 713.7
June Quarter	3 093.3	1 672.8	2 363.2	528.6	829.9	308.0	325.5	239.9	9 361.3
September Quarter	3 388.4	1 776.6	2 757.2	561.7	862.5	275.7	410.3	282.6	10 315.0
<b>Year ended September 2008</b>	13 450.5	7 162.7	10 364.9	2 193.0	3 600.4	1 412.2	1 329.7	963.4	40 476.7
<b>Year ended September 2009</b>	13 207.9	7 066.6	10 114.8	2 211.7	3 474.7	1 397.7	1 292.4	1 003.2	39 769.0

<i>Period</i>	<i>New South Wales</i>	<i>Victoria</i>	<i>Queensland</i>	<i>South Australia</i>	<i>Western Australia</i>	<i>Tasmania</i>	<i>Northern Territory</i>	<i>Australian Capital Territory</i>	<i>Australia</i>
<b>AVERAGE LENGTH OF STAY (days)</b>									
<b>2008</b>									
September Quarter	2.1	2.1	2.7	2.0	2.4	1.9	2.2	2.1	2.3
December Quarter	2.1	2.1	2.7	2.0	2.4	1.9	2.1	2.2	2.3
<b>2009</b>									
March Quarter	2.2	2.2	2.7	2.0	2.6	1.9	2.1	2.2	2.3
June Quarter	2.0	2.1	2.6	2.0	2.4	2.0	2.2	2.1	2.2
September Quarter	2.1	2.1	2.7	1.9	2.4	2.0	2.2	2.0	2.3
<b>Year ended September 2008</b>	2.1	2.1	2.7	2.0	2.4	1.9	2.1	2.2	2.2
<b>Year ended September 2009</b>	2.1	2.1	2.7	2.0	2.5	1.9	2.1	2.1	2.3
<b>TAKINGS FROM ACCOMMODATION (\$'000)</b>									
<b>2008</b>									
September Quarter	626 107	349 072	565 580	86 415	213 468	35 451	86 176	52 482	2 014 752
December Quarter	649 086	364 246	556 271	94 324	220 160	52 540	55 422	52 045	2 044 095
<b>2009</b>									
March Quarter	623 724	367 654	474 153	94 338	213 398	60 951	41 988	52 578	1 928 783
June Quarter	524 913	318 466	451 330	84 794	197 903	42 944	70 291	48 632	1 739 272
September Quarter	581 185	338 388	542 759	86 183	203 614	37 826	86 156	54 502	1 930 613
<b>Year ended September 2008</b>	2 528 415	1 422 372	2 081 995	353 320	835 055	185 615	241 559	205 130	7 853 462
<b>Year ended September 2009</b>	2 378 908	1 388 754	2 024 513	359 639	835 075	194 261	253 857	207 757	7 642 764
<b>AVERAGE TAKINGS PER ROOM NIGHT OCCUPIED (\$)</b>									
<b>2008</b>									
September Quarter	154.77	157.48	146.01	129.84	157.75	123.91	170.56	160.11	151.79
December Quarter	157.65	159.07	150.21	134.38	161.25	135.25	143.00	161.18	153.96
<b>2009</b>									
March Quarter	155.34	161.62	146.05	139.00	161.85	136.37	130.47	163.68	152.79
June Quarter	141.69	150.29	139.17	129.29	157.89	128.92	158.91	156.07	144.18
September Quarter	145.39	155.15	142.43	126.76	158.15	123.24	171.45	160.04	147.30
<b>Year ended September 2008</b>	155.82	158.30	144.93	129.48	154.21	128.75	147.49	159.37	150.77
<b>Year ended September 2009</b>	150.23	156.66	144.57	132.40	159.83	131.66	153.46	160.27	149.65
<b>AVERAGE TAKINGS PER ROOM NIGHT AVAILABLE (\$)</b>									
<b>2008</b>									
September Quarter	95.83	98.67	101.58	79.39	107.93	58.53	133.34	110.68	98.61
December Quarter	100.77	104.00	98.36	86.58	110.95	86.80	86.09	110.88	100.24
<b>2009</b>									
March Quarter	98.63	105.81	85.21	86.90	110.14	102.39	64.81	115.48	96.03
June Quarter	81.75	89.71	80.22	77.10	100.16	71.00	105.33	105.27	85.23
September Quarter	89.13	91.63	95.87	77.68	100.81	62.10	127.46	116.16	93.00
<b>Year ended September 2008</b>	98.54	102.45	94.50	81.97	106.45	77.02	98.58	110.91	97.63
<b>Year ended September 2009</b>	92.54	97.66	89.95	82.03	105.47	80.46	96.34	111.95	93.61

Period	New South Wales	Victoria	Queensland	South Australia	Western Australia	Tasmania	Northern Territory	Australian Capital Territory	Australia
ESTABLISHMENTS (no.)									
<b>2008</b>									
September Quarter	2 040	1 256	1 536	398	495	276	111	59	6 171
December Quarter	2 035	1 249	1 544	399	490	276	111	59	6 163
<b>2009</b>									
March Quarter	2 025	1 256	1 547	399	495	274	112	59	6 167
June Quarter	2 013	1 243	1 542	396	486	274	112	60	6 126
September Quarter	2 008	1 239	1 552	394	487	273	112	59	6 124
ROOMS (no.)									
<b>2008</b>									
September Quarter	77 035	42 882	64 810	13 172	22 748	7 604	7 178	5 184	240 613
December Quarter	76 959	43 035	65 586	13 216	22 762	7 611	7 166	5 151	241 486
<b>2009</b>									
March Quarter	77 390	43 727	66 075	13 350	22 872	7 638	np	np	243 689
June Quarter	77 097	43 731	65 910	13 345	22 886	7 658	7 501	5 146	243 274
September Quarter	76 885	44 276	65 672	13 314	23 091	7 627	7 490	5 130	243 485
BED SPACES (no.)									
<b>2008</b>									
September Quarter	213 886	118 039	201 233	35 896	61 850	21 271	20 869	15 221	688 265
December Quarter	213 737	118 731	203 041	36 034	61 736	21 376	20 808	15 092	690 555
<b>2009</b>									
March Quarter	215 731	119 336	204 716	36 383	61 803	21 310	np	np	695 287
June Quarter	214 599	119 737	204 279	36 510	61 317	21 349	21 412	15 175	694 378
September Quarter	212 804	119 858	201 338	36 387	62 185	21 360	21 434	14 582	689 948
PERSONS EMPLOYED (no.)									
<b>2008</b>									
September Quarter	36 674	24 432	34 574	9 135	12 138	5 440	3 335	2 601	128 329
December Quarter	35 874	24 390	33 047	8 872	11 823	5 525	3 113	2 485	125 129
<b>2009</b>									
March Quarter	34 556	24 369	31 966	8 829	11 581	5 621	np	np	122 727
June Quarter	34 286	23 752	31 709	8 575	11 285	5 418	3 253	2 375	120 653
September Quarter	34 252	24 221	32 257	8 648	11 543	5 297	3 395	2 495	122 108
ROOM NIGHTS OCCUPIED ('000)									
<b>2008</b>									
September Quarter	4 279.7	2 370.9	4 100.9	711.4	1 406.6	316.7	512.2	329.4	14 027.8
December Quarter	4 361.1	2 463.9	3 907.9	753.9	1 419.1	433.0	393.0	324.6	14 056.5
<b>2009</b>									
March Quarter	4 255.7	2 444.2	3 425.5	727.5	1 368.8	502.5	np	np	13 372.3
June Quarter	3 935.1	2 271.0	3 435.2	700.7	1 301.4	367.3	447.0	313.5	12 771.2
September Quarter	4 238.4	2 325.8	4 026.7	724.1	1 335.0	335.7	508.3	342.0	13 836.0
ROOM OCCUPANCY RATE (%)									
<b>2008</b>									
September Quarter	60.4	60.1	68.9	58.8	67.3	45.3	77.6	69.1	63.4
December Quarter	62.5	63.1	64.8	62.1	67.8	61.9	59.8	68.7	63.8
<b>2009</b>									
March Quarter	62.2	63.5	57.8	60.6	66.9	73.2	np	np	61.7
June Quarter	56.6	57.8	57.3	57.7	62.6	52.9	65.7	67.3	58.0
September Quarter	60.0	57.2	66.7	59.1	62.8	47.9	73.8	72.5	61.8

np not available for publication but included in totals where applicable, unless otherwise indicated

Period	New South Wales	Victoria	Queensland	South Australia	Western Australia	Tasmania	Northern Territory	Australian Capital Territory	Australia
GUEST NIGHTS OCCUPIED ('000)									
<b>2008</b>									
September Quarter	7 371.7	3 997.2	7 829.5	1 123.5	2 263.2	563.8	863.4	544.0	24 556.4
December Quarter	7 592.1	4 146.3	7 599.6	1 222.2	2 367.7	798.2	642.4	537.8	24 906.4
<b>2009</b>									
March Quarter	7 540.8	4 202.3	6 665.4	1 203.4	2 305.9	964.7	np	np	23 917.5
June Quarter	6 709.9	3 863.0	6 424.5	1 124.1	2 135.1	668.2	733.4	502.2	22 160.4
September Quarter	7 409.3	4 033.7	7 717.6	1 162.3	2 181.7	596.9	893.8	572.2	24 567.6
BED OCCUPANCY RATE (%)									
<b>2008</b>									
September Quarter	37.5	36.8	42.4	34.0	39.9	28.9	45.0	38.8	38.8
December Quarter	39.3	38.8	40.7	36.9	41.7	40.6	33.7	38.9	39.6
<b>2009</b>									
March Quarter	39.8	40.4	36.3	36.8	41.8	50.4	np	np	38.8
June Quarter	34.7	36.2	34.6	33.8	38.3	34.5	37.8	36.5	35.3
September Quarter	37.9	36.6	41.7	34.7	38.1	30.4	45.3	42.7	38.8
GUEST ARRIVALS ('000)									
<b>2008</b>									
September Quarter	3 616.9	1 925.8	2 963.6	579.3	949.2	295.5	399.7	262.9	10 992.8
December Quarter	3 698.6	2 041.5	2 857.9	622.2	972.4	423.5	310.8	245.6	11 172.6
<b>2009</b>									
March Quarter	3 525.8	1 959.6	2 474.6	593.6	904.7	502.9	np	np	10 454.2
June Quarter	3 321.4	1 832.2	2 536.9	569.1	871.0	344.4	331.0	241.4	10 047.4
September Quarter	3 629.5	1 930.6	2 954.8	603.3	904.1	305.5	416.5	283.7	11 028.0
AVERAGE LENGTH OF STAY (days)									
<b>2008</b>									
September Quarter	2.0	2.1	2.6	1.9	2.4	1.9	2.2	2.1	2.2
December Quarter	2.1	2.0	2.7	2.0	2.4	1.9	2.1	2.2	2.2
<b>2009</b>									
March Quarter	2.1	2.1	2.7	2.0	2.5	1.9	np	np	2.3
June Quarter	2.0	2.1	2.5	2.0	2.5	1.9	2.2	2.1	2.2
September Quarter	2.0	2.1	2.6	1.9	2.4	2.0	2.1	2.0	2.2
TAKINGS FROM ACCOMMODATION (\$'000)									
<b>2008</b>									
September Quarter	650 337	364 612	587 117	90 212	220 524	38 786	87 420	52 599	2 091 606
December Quarter	673 375	382 404	575 928	98 859	227 769	57 815	56 385	52 168	2 124 705
<b>2009</b>									
March Quarter	649 046	385 384	491 364	98 665	220 640	67 864	np	np	2 008 410
June Quarter	547 481	333 639	469 630	88 698	204 761	47 073	71 258	48 785	1 811 327
September Quarter	606 204	353 585	563 726	90 101	210 491	41 136	87 461	54 622	2 007 325
AVERAGE TAKINGS PER ROOM NIGHT OCCUPIED (\$)									
<b>2008</b>									
September Quarter	151.96	153.78	143.17	126.81	156.77	122.48	170.67	159.69	149.10
December Quarter	154.41	155.20	147.38	131.13	160.50	133.51	143.47	160.73	151.15
<b>2009</b>									
March Quarter	152.51	157.67	143.44	135.63	161.20	135.06	np	np	150.19
June Quarter	139.13	146.91	136.71	126.58	157.34	128.16	159.40	155.63	141.83
September Quarter	143.03	152.03	140.00	124.43	157.67	122.56	172.08	159.70	145.08

np not available for publication but included in totals where applicable, unless otherwise indicated

<i>Period</i>	<i>New South Wales</i>	<i>Victoria</i>	<i>Queensland</i>	<i>South Australia</i>	<i>Western Australia</i>	<i>Tasmania</i>	<i>Northern Territory</i>	<i>Australian Capital Territory</i>	<i>Australia</i>
AVERAGE TAKINGS PER ROOM NIGHT AVAILABLE (\$)									
<b>2008</b>									
September Quarter	91.82	92.49	98.67	74.51	105.56	55.53	132.38	110.29	94.60
December Quarter	96.49	97.98	95.55	81.47	108.89	82.65	85.73	110.49	96.39
<b>2009</b>									
March Quarter	94.81	100.08	82.94	82.25	107.86	98.85	np	np	92.68
June Quarter	78.78	84.97	78.37	73.04	98.43	67.83	104.75	104.76	82.32
September Quarter	85.85	86.92	93.42	73.56	99.08	58.69	126.92	115.74	89.71

np not available for publication but included in totals where applicable, unless otherwise indicated

Period	New South Wales	Victoria	Queensland	South Australia	Western Australia	Tasmania	Northern Territory	Australian Capital Territory	Australia
ESTABLISHMENTS (no.)									
<b>2008</b>									
September Quarter	432	353	255	134	170	45	51	3	1 443
December Quarter	433	354	254	134	171	46	50	3	1 445
<b>2009</b>									
March Quarter	434	351	253	135	172	45	49	3	1 442
June Quarter	434	346	253	135	172	46	49	3	1 438
September Quarter	434	343	253	135	169	44	50	3	1 431
ON-SITE VANS (no.)									
<b>2008</b>									
September Quarter	6 920	2 719	1 701	499	1 538	np	np	59	13 870
December Quarter	6 976	2 503	1 631	396	1 351	np	np	np	13 235
<b>2009</b>									
March Quarter	6 777	2 709	1 625	458	1 362	np	np	np	13 244
June Quarter	6 991	2 589	1 816	421	1 417	np	np	np	13 577
September Quarter	6 756	2 536	1 658	np	1 374	np	np	np	13 111
OTHER POWERED SITES (no.)									
<b>2008</b>									
September Quarter	38 329	32 770	18 778	11 085	14 814	np	np	373	123 196
December Quarter	38 985	32 956	18 821	11 231	14 888	np	np	np	124 486
<b>2009</b>									
March Quarter	39 508	32 714	18 794	11 271	14 782	np	np	np	124 487
June Quarter	39 453	32 263	18 775	11 369	15 022	np	np	np	124 528
September Quarter	39 579	32 256	19 048	np	14 649	np	np	np	124 342
UNPOWERED SITES (no.)									
<b>2008</b>									
September Quarter	10 904	9 496	5 460	4 208	3 234	np	np	400	38 117
December Quarter	10 951	9 055	5 376	4 175	3 237	np	np	np	37 754
<b>2009</b>									
March Quarter	10 906	9 086	5 280	4 008	3 376	np	np	np	37 513
June Quarter	10 576	9 208	5 055	3 995	3 382	np	np	np	37 055
September Quarter	10 236	8 620	4 830	np	3 076	np	np	np	35 089
CABINS FLATS, UNITS AND VILLAS (no.)									
<b>2008</b>									
September Quarter	10 334	5 445	4 868	2 498	2 809	np	np	96	27 865
December Quarter	10 310	5 618	4 794	2 525	3 118	np	np	np	28 138
<b>2009</b>									
March Quarter	10 165	5 485	4 738	2 537	3 102	np	np	np	27 828
June Quarter	10 309	5 385	4 773	2 526	2 890	np	np	np	27 692
September Quarter	10 245	5 473	4 775	np	2 870	np	np	np	27 674
TOTAL CAPACITY (no.)									
<b>2008</b>									
September Quarter	66 487	50 430	30 807	18 290	22 395	np	np	928	203 048
December Quarter	67 222	50 132	30 622	18 327	22 594	np	np	np	203 613
<b>2009</b>									
March Quarter	67 356	49 994	30 437	18 274	22 622	np	np	np	203 072
June Quarter	67 329	49 445	30 419	18 311	22 711	np	np	np	202 852
September Quarter	66 816	48 885	30 311	np	21 969	np	np	np	200 216

np not available for publication but included in totals where applicable, unless otherwise indicated

(a) Comprising establishments with 40 or more powered sites and cabins, flats, units and villas.



Period	New South Wales	Victoria	Queensland	South Australia	Western Australia	Tasmania	Northern Territory	Australian Capital Territory	Australia
PERSONS EMPLOYED (no.)									
<b>2008</b>									
September Quarter	2 822	1 724	1 524	797	1 254	np	np	92	9 110
December Quarter	3 048	1 855	1 503	814	1 241	np	np	np	9 357
<b>2009</b>									
March Quarter	2 995	1 811	1 498	804	1 224	np	np	np	9 174
June Quarter	2 847	1 714	1 536	802	1 292	np	np	np	9 163
September Quarter	2 898	1 663	1 582	np	1 260	np	np	np	9 109
SITES OCCUPIED BY LONG-TERM GUESTS (no.)									
<b>2008</b>									
September Quarter	5 951	2 844	5 171	919	3 339	np	np	154	19 178
December Quarter	6 416	2 988	4 993	948	3 139	np	np	np	19 360
<b>2009</b>									
March Quarter	6 166	2 891	4 871	991	3 295	np	np	np	19 120
June Quarter	6 432	2 929	5 238	912	3 454	np	np	np	19 966
September Quarter	6 691	2 977	5 026	np	3 269	np	np	np	19 920
OTHER SITES PERMANENTLY RESERVED (no.)									
<b>2008</b>									
September Quarter	18 746	14 011	1 049	2 340	1 659	np	np	—	38 679
December Quarter	18 531	14 431	1 003	2 248	1 710	np	np	np	38 850
<b>2009</b>									
March Quarter	18 529	14 105	973	2 315	1 911	np	np	np	38 689
June Quarter	18 159	13 245	1 038	2 167	1 697	np	np	np	37 229
September Quarter	17 770	13 817	1 251	np	1 815	np	np	np	37 634
SITE NIGHTS OCCUPIED ('000)									
<b>2008</b>									
September Quarter	3 262.2	1 972.9	1 801.3	565.2	1 094.4	np	np	27.5	9 242.7
December Quarter	3 609.8	2 249.8	1 334.1	662.1	922.8	np	np	np	9 165.9
<b>2009</b>									
March Quarter	3 711.8	2 446.1	1 149.9	756.7	952.5	np	np	np	9 410.7
June Quarter	3 371.5	2 102.0	1 444.7	663.6	1 028.3	np	np	np	9 101.9
September Quarter	3 292.7	1 984.2	1 799.0	np	1 152.2	np	np	np	9 404.2
SITE OCCUPANCY RATE (%)									
<b>2008</b>									
September Quarter	53.3	43.1	63.6	33.6	53.2	np	np	32.2	49.7
December Quarter	58.4	50.0	47.4	39.3	44.4	np	np	np	49.3
<b>2009</b>									
March Quarter	61.2	54.6	42.1	46.0	46.8	np	np	np	51.6
June Quarter	55.1	48.4	52.2	39.8	49.8	np	np	np	49.8
September Quarter	53.6	46.0	64.5	np	57.2	np	np	np	51.6

— nil or rounded to zero (including null cells)

np not available for publication but included in totals where applicable, unless otherwise indicated

(a) Comprising establishments with 40 or more powered sites and cabins, flats, units and villas.

<i>Period</i>	<i>New South Wales</i>	<i>Victoria</i>	<i>Queensland</i>	<i>South Australia</i>	<i>Western Australia</i>	<i>Tasmania</i>	<i>Northern Territory</i>	<i>Australian Capital Territory</i>	<i>Australia</i>
TAKINGS FROM ACCOMMODATION (\$'000)									
<b>2008</b>									
September Quarter	62 087	32 491	55 194	13 273	31 666	np	np	1 263	212 042
December Quarter	84 895	41 441	42 508	18 073	28 050	np	np	np	227 550
<b>2009</b>									
March Quarter	92 374	47 720	34 622	21 133	30 685	np	np	np	240 294
June Quarter	66 653	33 816	44 546	17 429	34 002	np	np	np	213 016
September Quarter	67 112	35 844	58 274	np	36 704	np	np	np	233 777

np not available for publication but included in totals where applicable,  
unless otherwise indicated

(a) Comprising establishments with 40 or more powered sites and cabins,  
flats, units and villas.

Period	New South Wales	Victoria	Queensland	South Australia	Western Australia	Tasmania	Northern Territory	Australian Capital Territory	Australia
--------	-----------------	----------	------------	-----------------	-------------------	----------	--------------------	------------------------------	-----------

## ESTABLISHMENTS (no.)

<b>2008</b>									
September Quarter	74	43	70	8	26	1	2	—	224
December Quarter	73	43	70	8	26	1	2	—	223
<b>2009</b>									
March Quarter	72	42	70	8	26	1	2	—	221
June Quarter	70	42	69	8	25	1	2	—	217
September Quarter	70	42	67	8	25	1	2	—	215

## ON-SITE VANS (no.)

<b>2008</b>									
September Quarter	1 190	601	1 923	96	364	np	np	—	4 183
December Quarter	1 166	588	1 767	83	364	np	np	—	3 977
<b>2009</b>									
March Quarter	1 074	574	1 781	83	357	np	np	—	3 878
June Quarter	1 098	570	1 691	78	325	np	np	—	3 769
September Quarter	1 081	562	1 606	np	329	np	np	—	3 761

## OTHER POWERED SITES (no.)

<b>2008</b>									
September Quarter	5 096	3 289	4 592	758	2 073	np	np	—	16 067
December Quarter	4 873	3 483	4 832	594	2 082	np	np	—	16 123
<b>2009</b>									
March Quarter	4 896	3 449	4 867	594	1 938	np	np	—	16 003
June Quarter	4 725	3 522	4 896	590	1 939	np	np	—	15 951
September Quarter	4 734	3 503	4 696	np	1 982	np	np	—	15 685

## UNPOWERED SITES (no.)

<b>2008</b>									
September Quarter	772	344	460	77	155	np	np	—	1 907
December Quarter	732	343	458	68	145	np	np	—	1 845
<b>2009</b>									
March Quarter	652	383	466	69	133	np	np	—	1 802
June Quarter	612	331	440	63	126	np	np	—	1 634
September Quarter	631	313	417	np	96	np	np	—	1 590

## CABINS FLATS, UNITS AND VILLAS (no.)

<b>2008</b>									
September Quarter	2 438	1 606	1 845	282	696	np	np	—	6 908
December Quarter	2 690	1 648	1 918	477	694	np	np	—	7 468
<b>2009</b>									
March Quarter	2 680	1 433	1 909	477	689	np	np	—	7 229
June Quarter	2 761	1 411	1 914	477	691	np	np	—	7 295
September Quarter	2 727	1 458	1 876	np	665	np	np	—	7 229

— nil or rounded to zero (including null cells)

np not available for publication but included in totals where applicable, unless otherwise indicated

(a) Comprising establishments with 40 or more powered sites and cabins, flats, units and villas.

Period	New South Wales	Victoria	Queensland	South Australia	Western Australia	Tasmania	Northern Territory	Australian Capital Territory	Australia
TOTAL CAPACITY (no.)									
<b>2008</b>									
September Quarter	9 496	5 840	8 820	1 213	3 288	np	np	—	29 065
December Quarter	9 461	6 062	8 975	1 222	3 285	np	np	—	29 413
<b>2009</b>									
March Quarter	9 302	5 839	9 023	1 223	3 117	np	np	—	28 912
June Quarter	9 196	5 834	8 941	1 208	3 081	np	np	—	28 649
September Quarter	9 173	5 836	8 595	np	3 072	np	np	—	28 265
PERSONS EMPLOYED (no.)									
<b>2008</b>									
September Quarter	435	241	483	55	157	np	np	—	1 385
December Quarter	458	241	446	56	162	np	np	—	1 377
<b>2009</b>									
March Quarter	438	235	491	52	167	np	np	—	1 398
June Quarter	423	237	442	54	162	np	np	—	1 334
September Quarter	424	243	446	np	168	np	np	—	1 349
SITES OCCUPIED BY LONG-TERM GUESTS (no.)									
<b>2008</b>									
September Quarter	4 690	2 633	5 642	616	1 885	np	np	—	15 514
December Quarter	4 602	2 768	5 637	627	2 009	np	np	—	15 691
<b>2009</b>									
March Quarter	4 556	2 555	5 728	653	1 896	np	np	—	15 433
June Quarter	4 558	2 645	5 658	663	1 855	np	np	—	15 416
September Quarter	4 608	2 541	5 356	np	1 856	np	np	—	15 030
OTHER SITES PERMANENTLY RESERVED (no.)									
<b>2008</b>									
September Quarter	898	716	305	1	30	np	np	—	2 014
December Quarter	934	674	267	11	87	np	np	—	2 037
<b>2009</b>									
March Quarter	916	741	109	11	65	np	np	—	1 909
June Quarter	918	691	145	11	85	np	np	—	1 917
September Quarter	905	705	178	np	94	np	np	—	1 960
SITE NIGHTS OCCUPIED ('000)									
<b>2008</b>									
September Quarter	645.4	361.2	681.8	71.2	252.2	np	np	—	2 025.4
December Quarter	675.9	398.7	656.7	81.4	252.7	np	np	—	2 080.4
<b>2009</b>									
March Quarter	644.6	404.6	614.1	78.4	233.5	np	np	—	1 991.2
June Quarter	619.3	366.2	635.6	86.0	228.7	np	np	—	1 952.2
September Quarter	630.2	355.5	636.9	np	230.1	np	np	—	1 953.4

— nil or rounded to zero (including null cells)

np not available for publication but included in totals where applicable, unless otherwise indicated

(a) Comprising establishments with 40 or more powered sites and cabins, flats, units and villas.

<i>Period</i>	<i>New South Wales</i>	<i>Victoria</i>	<i>Queensland</i>	<i>South Australia</i>	<i>Western Australia</i>	<i>Tasmania</i>	<i>Northern Territory</i>	<i>Australian Capital Territory</i>	<i>Australia</i>
---------------	--------------------------------	-----------------	-------------------	----------------------------	------------------------------	-----------------	-------------------------------	---	------------------

## SITE OCCUPANCY RATE (%)

<b>2008</b>									
September Quarter	73.9	67.2	84.0	63.8	83.4	np	np	—	75.8
December Quarter	77.7	71.5	79.5	72.4	84.4	np	np	—	77.0
<b>2009</b>									
March Quarter	77.0	77.0	75.6	71.2	83.2	np	np	—	76.5
June Quarter	74.0	69.0	78.1	78.3	81.6	np	np	—	74.9
September Quarter	74.7	66.2	80.6	np	81.4	np	np	—	75.1

## TAKINGS FROM ACCOMMODATION (\$'000)

<b>2008</b>									
September Quarter	12 218	7 089	14 823	1 958	6 343	np	np	—	42 903
December Quarter	15 013	6 839	14 831	2 143	6 445	np	np	—	45 647
<b>2009</b>									
March Quarter	14 168	7 078	13 655	2 106	7 069	np	np	—	44 528
June Quarter	12 380	6 271	13 791	2 129	6 413	np	np	—	41 456
September Quarter	12 093	7 350	14 825	np	7 564	np	np	—	44 684

— nil or rounded to zero (including null cells)

np not available for publication but included in totals where applicable,  
unless otherwise indicated(a) Comprising establishments with 40 or more powered sites and  
cabins, flats, units and villas.

Period	New South Wales	Victoria	Queensland	South Australia	Western Australia	Tasmania	Northern Territory	Australian Capital Territory	Australia
ESTABLISHMENTS (no.)									
<b>2008</b>									
September Quarter	506	396	325	142	196	46	53	3	1 667
December Quarter	506	397	324	142	197	47	52	3	1 668
<b>2009</b>									
March Quarter	506	393	323	143	198	46	51	3	1 663
June Quarter	504	388	322	143	197	47	51	3	1 655
September Quarter	504	385	320	143	194	45	52	3	1 646
ON-SITE VANS (no.)									
<b>2008</b>									
September Quarter	8 110	3 320	3 624	595	1 902	269	174	59	18 053
December Quarter	8 142	3 091	3 398	479	1 715	np	84	np	17 212
<b>2009</b>									
March Quarter	7 851	3 283	3 406	541	1 719	169	np	np	17 122
June Quarter	8 089	3 159	3 507	499	1 742	np	87	np	17 346
September Quarter	7 837	3 098	3 264	632	1 703	np	88	np	16 872
OTHER POWERED SITES (no.)									
<b>2008</b>									
September Quarter	43 425	36 059	23 370	11 843	16 887	2 807	4 499	373	139 263
December Quarter	43 858	36 439	23 653	11 825	16 970	np	4 625	np	140 609
<b>2009</b>									
March Quarter	44 404	36 163	23 661	11 865	16 720	2 886	np	np	140 490
June Quarter	44 178	35 785	23 671	11 959	16 961	np	4 672	np	140 479
September Quarter	44 313	35 759	23 744	11 554	16 631	np	4 771	np	140 027
UNPOWERED SITES (no.)									
<b>2008</b>									
September Quarter	11 676	9 840	5 920	4 285	3 389	1 685	2 829	400	40 024
December Quarter	11 683	9 398	5 834	4 243	3 382	np	2 962	np	39 599
<b>2009</b>									
March Quarter	11 558	9 469	5 746	4 077	3 509	1 673	np	np	39 315
June Quarter	11 188	9 539	5 495	4 058	3 508	np	2 837	np	38 689
September Quarter	10 867	8 933	5 247	3 794	3 172	np	2 721	np	36 679
CABINS FLATS, UNITS AND VILLAS (no.)									
<b>2008</b>									
September Quarter	12 772	7 051	6 713	2 780	3 505	646	1 210	96	34 773
December Quarter	13 000	7 266	6 712	3 002	3 812	np	1 063	np	35 606
<b>2009</b>									
March Quarter	12 845	6 918	6 647	3 014	3 791	652	np	np	35 057
June Quarter	13 070	6 796	6 687	3 003	3 581	np	1 068	np	34 987
September Quarter	12 972	6 931	6 651	3 001	3 535	np	1 053	np	34 903

np not available for publication but included in totals where applicable, unless otherwise indicated

(a) Comprising establishments with 40 or more powered sites and cabins, flats, units and villas.

Period	New South Wales	Victoria	Queensland	South Australia	Western Australia	Tasmania	Northern Territory	Australian Capital Territory	Australia
TOTAL CAPACITY (no.)									
<b>2008</b>									
September Quarter	75 983	56 270	39 627	19 503	25 683	5 407	8 712	928	232 113
December Quarter	76 683	56 194	39 597	19 549	25 879	np	8 734	np	233 026
<b>2009</b>									
March Quarter	76 658	55 833	39 460	19 497	25 739	5 380	np	np	231 984
June Quarter	76 525	55 279	39 360	19 519	25 792	np	8 664	np	231 501
September Quarter	75 989	54 721	38 906	18 981	25 041	np	8 633	np	228 481
PERSONS EMPLOYED (no.)									
<b>2008</b>									
September Quarter	3 257	1 965	2 007	852	1 411	264	647	92	10 495
December Quarter	3 506	2 096	1 949	870	1 403	np	526	np	10 734
<b>2009</b>									
March Quarter	3 433	2 046	1 989	856	1 391	278	np	np	10 572
June Quarter	3 270	1 951	1 978	856	1 454	np	654	np	10 497
September Quarter	3 322	1 906	2 028	851	1 428	np	597	np	10 458
SITES OCCUPIED BY LONG-TERM GUESTS (no.)									
<b>2008</b>									
September Quarter	10 641	5 477	10 813	1 535	5 224	327	521	154	34 692
December Quarter	11 018	5 756	10 630	1 575	5 148	np	477	np	35 051
<b>2009</b>									
March Quarter	10 722	5 446	10 599	1 644	5 191	306	np	np	34 553
June Quarter	10 990	5 574	10 896	1 575	5 309	np	585	np	35 382
September Quarter	11 299	5 518	10 382	1 625	5 125	np	591	np	34 950
OTHER SITES PERMANENTLY RESERVED (no.)									
<b>2008</b>									
September Quarter	19 644	14 727	1 354	2 341	1 689	938	—	—	40 693
December Quarter	19 465	15 105	1 270	2 259	1 797	np	21	np	40 887
<b>2009</b>									
March Quarter	19 445	14 846	1 082	2 326	1 976	895	np	np	40 598
June Quarter	19 077	13 936	1 183	2 178	1 782	np	47	np	39 146
September Quarter	18 675	14 522	1 429	2 099	1 909	np	10	np	39 594
SITE NIGHTS OCCUPIED ('000)									
<b>2008</b>									
September Quarter	3 907.6	2 334.1	2 483.2	636.4	1 346.7	157.9	374.8	27.5	11 268.1
December Quarter	4 285.7	2 648.5	1 990.8	743.5	1 175.5	np	164.7	np	11 246.3
<b>2009</b>									
March Quarter	4 356.4	2 850.6	1 764.0	835.1	1 186.0	249.8	np	np	11 402.0
June Quarter	3 990.8	2 468.2	2 080.2	749.7	1 257.0	np	295.1	np	11 054.1
September Quarter	3 922.9	2 339.8	2 435.9	688.1	1 382.3	np	412.3	np	11 357.7

— nil or rounded to zero (including null cells)

np not available for publication but included in totals where applicable, unless otherwise indicated

(a) Comprising establishments with 40 or more powered sites and cabins, flats, units and villas.

<i>Period</i>	<i>New South Wales</i>	<i>Victoria</i>	<i>Queensland</i>	<i>South Australia</i>	<i>Western Australia</i>	<i>Tasmania</i>	<i>Northern Territory</i>	<i>Australian Capital Territory</i>	<i>Australia</i>
---------------	--------------------------------	-----------------	-------------------	----------------------------	------------------------------	-----------------	-------------------------------	---	------------------

## SITE OCCUPANCY RATE (%)

<b>2008</b>									
September Quarter	55.9	45.6	68.1	35.5	57.1	32.8	46.8	32.2	53.0
December Quarter	60.7	52.4	54.7	41.3	49.4	np	20.8	np	52.8
<b>2009</b>									
March Quarter	63.1	56.9	49.8	47.6	51.2	52.5	np	np	54.7
June Quarter	57.3	50.6	58.1	42.2	53.6	np	37.4	np	52.9
September Quarter	56.2	48.2	68.1	39.4	60.2	np	51.9	np	54.6

## TAKINGS FROM ACCOMMODATION (\$'000)

<b>2008</b>									
September Quarter	74 305	39 580	70 017	15 232	38 009	3 078	13 462	1 263	254 945
December Quarter	99 908	48 280	57 339	20 216	34 495	np	6 258	np	273 197
<b>2009</b>									
March Quarter	106 542	54 798	48 278	23 240	37 754	7 863	np	np	284 822
June Quarter	79 033	40 087	58 336	19 558	40 414	np	11 879	np	254 472
September Quarter	79 204	43 194	73 100	17 532	44 268	np	16 759	np	278 461

np not available for publication but included in totals where applicable, unless otherwise indicated

(a) Comprising establishments with 40 or more powered sites and cabins, flats, units and villas.



	New South Wales	Victoria	Queensland	South Australia	Western Australia	Tasmania	Northern Territory	Australian Capital Territory	Australia
--	-----------------------	----------	------------	--------------------	----------------------	----------	-----------------------	------------------------------------	-----------

LETTING ENTITIES (a) (no.)

<b>2008</b>									
September Quarter	98	13	33	9	2	2	1	—	158
December Quarter	98	13	32	9	2	2	1	—	157
<b>2009</b>									
March Quarter	98	13	32	9	2	2	1	—	157
June Quarter	97	13	32	9	2	2	1	—	156
September Quarter	96	13	32	9	2	2	1	—	155

SINGLE BEDROOM HOLIDAY FLATS, UNITS AND HOUSES (no.)

<b>2008</b>									
September Quarter	359	72	153	11	np	np	np	—	609
December Quarter	425	69	149	6	np	np	np	—	664
<b>2009</b>									
March Quarter	423	110	182	6	np	np	np	—	736
June Quarter	363	64	141	6	np	np	np	—	589
September Quarter	377	68	129	12	np	np	np	—	600

MULTIPLE BEDROOM HOLIDAY FLATS, UNITS AND HOUSES (no.)

<b>2008</b>									
September Quarter	7 466	1 817	2 796	706	np	np	np	—	13 004
December Quarter	7 538	1 926	2 924	690	np	np	np	—	13 298
<b>2009</b>									
March Quarter	7 576	2 007	2 847	694	np	np	np	—	13 346
June Quarter	7 310	2 104	2 863	698	np	np	np	—	13 198
September Quarter	7 142	2 113	2 879	688	np	np	np	—	13 045

TOTAL HOLIDAY FLATS, UNITS AND HOUSES (no.)

<b>2008</b>									
September Quarter	7 825	1 889	2 949	717	np	np	np	—	13 613
December Quarter	7 963	1 995	3 073	696	np	np	np	—	13 962
<b>2009</b>									
March Quarter	7 999	2 117	3 029	700	np	np	np	—	14 082
June Quarter	7 673	2 168	3 004	704	np	np	np	—	13 787
September Quarter	7 519	2 181	3 008	700	np	np	np	—	13 645

BED SPACES (no.)

<b>2008</b>									
September Quarter	42 758	11 912	14 158	5 168	np	np	np	—	75 318
December Quarter	42 981	11 897	14 626	5 046	np	np	np	—	75 924
<b>2009</b>									
March Quarter	44 262	12 744	14 561	5 044	np	np	np	—	77 959
June Quarter	43 222	13 059	14 617	4 945	np	np	np	—	77 203
September Quarter	42 903	13 176	14 634	4 977	np	np	np	—	77 035

— nil or rounded to zero (including null cells)

np not available for publication but included in totals where applicable, unless otherwise indicated

(a) The number of managers, owners or real estate agents with 15 or more self-contained units.

	New South Wales	Victoria	Queensland	South Australia	Western Australia	Tasmania	Northern Territory	Australian Capital Territory	Australia
UNIT NIGHTS OCCUPIED ('000)									
<b>2008</b>									
September Quarter	163.2	12.2	142.5	7.2	np	np	np	—	332.8
December Quarter	212.6	19.5	154.6	12.5	np	np	np	—	406.7
<b>2009</b>									
March Quarter	262.8	26.9	137.5	20.8	np	np	np	—	458.5
June Quarter	157.4	9.4	104.4	9.1	np	np	np	—	287.0
September Quarter	163.5	10.7	135.8	7.8	np	np	np	—	324.4
UNIT OCCUPANCY RATE (%)									
<b>2008</b>									
September Quarter	22.7	7.0	52.5	10.9	np	np	np	—	26.6
December Quarter	29.0	10.6	54.7	19.6	np	np	np	—	31.7
<b>2009</b>									
March Quarter	36.5	14.2	50.5	33.0	np	np	np	—	36.2
June Quarter	22.5	4.8	38.2	14.2	np	np	np	—	22.9
September Quarter	23.6	5.3	49.1	12.1	np	np	np	—	25.8
UNIT LETTINGS ('000)									
<b>2008</b>									
September Quarter	23.7	2.7	22.9	3.8	np	np	np	—	54.2
December Quarter	34.3	5.0	35.8	6.2	np	np	np	—	82.6
<b>2009</b>									
March Quarter	36.0	5.0	29.2	9.1	np	np	np	—	81.1
June Quarter	20.7	2.3	25.1	4.8	np	np	np	—	54.2
September Quarter	25.3	2.8	25.2	3.8	np	np	np	—	58.2
AVERAGE LENGTH OF STAY ( <i>days</i> )									
<b>2008</b>									
September Quarter	6.9	4.4	6.2	1.9	np	np	np	—	6.1
December Quarter	6.2	3.9	4.3	2.0	np	np	np	—	4.9
<b>2009</b>									
March Quarter	7.3	5.4	4.7	2.3	np	np	np	—	5.7
June Quarter	7.6	4.0	4.2	1.9	np	np	np	—	5.3
September Quarter	6.5	3.8	5.4	2.0	np	np	np	—	5.6
TAKINGS FROM ACCOMMODATION (\$'000)									
<b>2008</b>									
September Quarter	16 326	2 226	14 094	566	np	np	np	—	33 983
December Quarter	26 862	3 249	18 291	1 335	np	np	np	—	50 726
<b>2009</b>									
March Quarter	31 765	5 055	14 496	2 636	np	np	np	—	55 063
June Quarter	13 954	1 586	10 566	904	np	np	np	—	27 587
September Quarter	16 729	1 984	15 937	673	np	np	np	—	35 936

— nil or rounded to zero (including null cells)

np not available for publication but included in totals where applicable, unless otherwise indicated

	New South Wales	Victoria	Queensland	South Australia	Western Australia	Tasmania	Northern Territory	Australian Capital Territory	Australia
--	-----------------------	----------	------------	--------------------	----------------------	----------	-----------------------	------------------------------------	-----------

LETTING ENTITIES (a) (no.)

<b>2008</b>									
September Quarter	58	21	312	7	19	6	2	3	428
December Quarter	59	21	314	7	20	7	2	3	433
<b>2009</b>									
March Quarter	59	20	315	7	20	6	2	3	432
June Quarter	59	20	313	7	20	7	2	3	431
September Quarter	60	20	306	7	20	6	2	3	424

SINGLE BEDROOM HOLIDAY FLATS, UNITS AND HOUSES (no.)

<b>2008</b>									
September Quarter	441	311	2 839	100	np	np	np	np	4 189
December Quarter	434	268	2 888	91	np	np	np	np	4 190
<b>2009</b>									
March Quarter	416	299	3 054	97	np	np	np	np	4 366
June Quarter	415	252	2 999	95	np	np	np	np	4 274
September Quarter	436	283	2 921	91	np	np	np	np	4 242

MULTIPLE BEDROOM HOLIDAY FLATS, UNITS AND HOUSES (no.)

<b>2008</b>									
September Quarter	1 213	774	7 789	141	np	np	np	np	10 887
December Quarter	1 222	844	7 825	136	np	np	np	np	11 022
<b>2009</b>									
March Quarter	1 238	763	7 750	135	np	np	np	np	10 876
June Quarter	1 221	801	7 830	134	np	np	np	np	10 971
September Quarter	1 308	802	7 734	136	np	np	np	np	10 948

TOTAL HOLIDAY FLATS, UNITS AND HOUSES (no.)

<b>2008</b>									
September Quarter	1 654	1 085	10 628	241	np	np	np	np	15 076
December Quarter	1 656	1 112	10 713	227	np	np	np	np	15 212
<b>2009</b>									
March Quarter	1 654	1 062	10 804	232	np	np	np	np	15 242
June Quarter	1 636	1 053	10 829	229	np	np	np	np	15 245
September Quarter	1 744	1 085	10 655	227	np	np	np	np	15 190

BED SPACES (no.)

<b>2008</b>									
September Quarter	7 204	4 408	41 927	1 015	np	np	np	np	61 672
December Quarter	6 965	4 733	41 852	984	np	np	np	np	61 850
<b>2009</b>									
March Quarter	7 176	5 119	42 185	993	np	np	np	np	62 748
June Quarter	7 181	4 894	41 995	976	np	np	np	np	62 310
September Quarter	7 512	4 802	41 496	962	np	np	np	np	61 925

np not available for publication but included in totals where applicable, unless otherwise indicated

(a) The number of owners, managers or real estate agents with 15 or more self-contained units.

	New South Wales	Victoria	Queensland	South Australia	Western Australia	Tasmania	Northern Territory	Australian Capital Territory	Australia
PERSONS EMPLOYED (no.)									
<b>2008</b>									
September Quarter	509	277	1 275	60	np	np	np	np	2 526
December Quarter	556	255	1 357	61	np	np	np	np	2 648
<b>2009</b>									
March Quarter	538	237	1 398	44	np	np	np	np	2 665
June Quarter	558	250	1 334	42	np	np	np	np	2 625
September Quarter	566	258	1 315	67	np	np	np	np	2 644
UNIT NIGHTS OCCUPIED ('000)									
<b>2008</b>									
September Quarter	75.2	51.8	664.1	13.2	np	np	np	np	889.7
December Quarter	91.8	47.9	640.0	15.4	np	np	np	np	898.9
<b>2009</b>									
March Quarter	92.7	47.7	586.8	15.4	np	np	np	np	846.8
June Quarter	68.6	46.0	515.7	15.1	np	np	np	np	736.4
September Quarter	79.7	47.1	646.6	15.5	np	np	np	np	871.2
UNIT OCCUPANCY RATE (%)									
<b>2008</b>									
September Quarter	49.7	51.9	67.9	59.5	np	np	np	np	64.2
December Quarter	60.2	50.9	64.9	73.5	np	np	np	np	64.6
<b>2009</b>									
March Quarter	62.3	53.7	60.3	73.5	np	np	np	np	62.0
June Quarter	46.5	50.9	52.5	72.3	np	np	np	np	53.4
September Quarter	50.4	47.2	66.0	74.3	np	np	np	np	62.4
UNIT LETTINGS ('000)									
<b>2008</b>									
September Quarter	28.4	10.3	231.5	4.5	np	np	np	np	305.5
December Quarter	36.4	10.8	259.2	4.8	np	np	np	np	351.8
<b>2009</b>									
March Quarter	36.9	10.5	230.7	4.4	np	np	np	np	320.7
June Quarter	27.5	9.6	200.1	5.2	np	np	np	np	279.5
September Quarter	35.3	10.7	236.6	5.1	np	np	np	np	321.9
AVERAGE LENGTH OF STAY (days)									
<b>2008</b>									
September Quarter	2.6	5.0	2.9	2.9	np	np	np	np	2.9
December Quarter	2.5	4.4	2.5	3.2	np	np	np	np	2.6
<b>2009</b>									
March Quarter	2.5	4.5	2.5	3.5	np	np	np	np	2.6
June Quarter	2.5	4.8	2.6	2.9	np	np	np	np	2.6
September Quarter	2.3	4.4	2.7	3.1	np	np	np	np	2.7
TAKINGS FROM ACCOMMODATION (\$'000)									
<b>2008</b>									
September Quarter	11 963	8 363	85 305	1 534	np	np	np	np	117 233
December Quarter	14 202	6 797	92 244	1 949	np	np	np	np	129 322
<b>2009</b>									
March Quarter	14 939	7 352	80 788	1 892	np	np	np	np	119 791
June Quarter	9 320	5 636	63 701	1 519	np	np	np	np	92 258
September Quarter	13 143	7 995	84 524	1 552	np	np	np	np	118 212

np not available for publication but included in totals where applicable, unless otherwise indicated

	New South Wales	Victoria	Queensland	South Australia	Western Australia	Tasmania	Northern Territory	Australian Capital Territory	Australia
--	-----------------------	----------	------------	--------------------	----------------------	----------	-----------------------	------------------------------------	-----------

LETTING ENTITIES (a) (no.)

<b>2008</b>									
September Quarter	156	34	345	16	21	8	3	3	586
December Quarter	157	34	346	16	22	9	3	3	590
<b>2009</b>									
March Quarter	157	33	347	16	22	8	3	3	589
June Quarter	156	33	345	16	22	9	3	3	587
September Quarter	156	33	338	16	22	8	3	3	579

SINGLE BEDROOM HOLIDAY FLATS, UNITS AND HOUSES (no.)

<b>2008</b>									
September Quarter	800	383	2 992	111	373	np	41	np	4 798
December Quarter	859	337	3 037	97	373	49	np	np	4 854
<b>2009</b>									
March Quarter	839	409	3 236	103	371	42	np	np	5 102
June Quarter	778	316	3 140	101	372	50	np	np	4 863
September Quarter	813	351	3 050	103	376	42	np	np	4 842

MULTIPLE BEDROOM HOLIDAY FLATS, UNITS AND HOUSES (no.)

<b>2008</b>									
September Quarter	8 679	2 591	10 585	847	837	np	58	np	23 891
December Quarter	8 760	2 770	10 749	826	851	195	np	np	24 320
<b>2009</b>									
March Quarter	8 814	2 770	10 597	829	856	187	np	np	24 222
June Quarter	8 531	2 905	10 693	832	846	194	np	np	24 169
September Quarter	8 450	2 915	10 613	824	837	187	np	np	23 993

TOTAL HOLIDAY FLATS, UNITS AND HOUSES (no.)

<b>2008</b>									
September Quarter	9 479	2 974	13 577	958	1 210	np	99	np	28 689
December Quarter	9 619	3 107	13 786	923	1 224	244	np	np	29 174
<b>2009</b>									
March Quarter	9 653	3 179	13 833	932	1 227	229	np	np	29 324
June Quarter	9 309	3 221	13 833	933	1 218	244	np	np	29 032
September Quarter	9 263	3 266	13 663	927	1 213	229	np	np	28 835

BED SPACES (no.)

<b>2008</b>									
September Quarter	49 962	16 320	56 085	6 183	6 277	np	414	np	136 990
December Quarter	49 946	16 630	56 478	6 030	6 399	1 172	np	np	137 774
<b>2009</b>									
March Quarter	51 438	17 863	56 746	6 037	6 444	1 073	np	np	140 707
June Quarter	50 403	17 953	56 612	5 921	6 411	1 128	np	np	139 513
September Quarter	50 415	17 978	56 130	5 939	6 323	1 077	np	np	138 960

np not available for publication but included in totals where applicable, unless otherwise indicated

(a) The number of owners, managers or real estate agents with 15 or more self-contained units.

	New South Wales	Victoria	Queensland	South Australia	Western Australia	Tasmania	Northern Territory	Australian Capital Territory	Australia
UNIT NIGHTS OCCUPIED ('000)									
<b>2008</b>									
September Quarter	238.3	63.9	806.6	20.4	67.8	np	8.0	np	1 222.5
December Quarter	304.4	67.3	794.5	27.9	83.7	8.0	np	np	1 305.6
<b>2009</b>									
March Quarter	355.5	74.6	724.3	36.1	83.7	14.8	np	np	1 305.3
June Quarter	226.0	55.4	620.2	24.1	72.1	7.7	np	np	1 023.4
September Quarter	243.3	57.8	782.4	23.3	64.0	5.2	np	np	1 195.5
UNIT OCCUPANCY RATE (%)									
<b>2008</b>									
September Quarter	27.4	23.4	64.6	23.1	60.9	np	88.1	np	46.3
December Quarter	34.4	24.3	62.6	32.9	74.3	35.4	np	np	48.8
<b>2009</b>									
March Quarter	40.9	26.8	58.2	43.1	75.8	72.0	np	np	49.6
June Quarter	26.7	19.3	49.4	28.4	65.0	34.8	np	np	38.9
September Quarter	28.6	19.2	62.2	27.3	57.3	24.7	np	np	45.1
UNIT LETTINGS ('000)									
<b>2008</b>									
September Quarter	52.1	13.1	254.5	8.3	24.4	np	3.0	np	359.7
December Quarter	70.7	15.9	295.0	10.9	34.0	3.6	np	np	434.4
<b>2009</b>									
March Quarter	72.8	15.6	259.9	13.5	28.6	7.8	np	np	401.8
June Quarter	48.2	11.9	225.3	10.0	28.9	3.7	np	np	333.7
September Quarter	60.5	13.5	261.7	8.9	28.3	2.0	np	np	380.1
AVERAGE LENGTH OF STAY (days)									
<b>2008</b>									
September Quarter	4.6	4.9	3.2	2.5	2.8	np	2.7	np	3.4
December Quarter	4.3	4.2	2.7	2.6	2.5	2.2	np	np	3.0
<b>2009</b>									
March Quarter	4.9	4.8	2.8	2.7	2.9	1.9	np	np	3.2
June Quarter	4.7	4.7	2.8	2.4	2.5	2.1	np	np	3.1
September Quarter	4.0	4.3	3.0	2.6	2.3	2.6	np	np	3.1
TAKINGS FROM ACCOMMODATION (\$'000)									
<b>2008</b>									
September Quarter	28 289	10 588	99 399	2 101	7 166	np	1 368	np	151 216
December Quarter	41 065	10 046	110 535	3 285	11 332	971	np	np	180 048
<b>2009</b>									
March Quarter	46 704	12 407	95 283	4 527	11 542	2 051	np	np	174 854
June Quarter	23 274	7 222	74 267	2 422	8 906	913	np	np	119 845
September Quarter	29 872	9 979	100 462	2 225	7 553	622	np	np	154 148

np not available for publication but included in totals where applicable, unless otherwise indicated

Period	New South Wales	Victoria	Queensland	South Australia	Western Australia	Tasmania	Northern Territory	Australian Capital Territory	Australia
ESTABLISHMENTS (no.)									
<b>2008</b>									
September Quarter	98	65	117	27	62	20	21	3	413
December Quarter	98	63	115	26	61	20	21	3	407
<b>2009</b>									
March Quarter	97	63	115	26	62	20	20	3	406
June Quarter	98	61	113	27	61	20	21	3	404
September Quarter	98	62	111	27	59	19	21	3	400
BED SPACES (no.)									
<b>2008</b>									
September Quarter	11 403	8 510	13 658	2 433	4 911	1 451	3 093	716	46 175
December Quarter	11 459	8 289	13 671	2 457	4 754	np	3 034	np	45 921
<b>2009</b>									
March Quarter	11 473	8 625	13 376	2 363	4 894	np	2 852	np	45 847
June Quarter	11 519	8 536	13 279	2 471	4 815	np	2 902	np	45 728
September Quarter	11 916	8 615	13 656	2 470	4 690	1 395	2 937	719	46 398
PERSONS EMPLOYED (no.)									
<b>2008</b>									
September Quarter	673	485	1 297	121	331	125	297	65	3 394
December Quarter	697	515	1 201	112	328	np	319	np	3 385
<b>2009</b>									
March Quarter	737	494	1 134	119	336	np	337	np	3 396
June Quarter	718	488	1 209	116	314	np	283	np	3 322
September Quarter	731	529	1 200	118	274	126	293	70	3 341
GUEST NIGHTS OCCUPIED (no.)									
<b>2008</b>									
September Quarter	534 841	325 008	761 036	92 151	250 235	15 707	196 392	39 538	2 214 908
December Quarter	706 921	351 940	717 311	95 546	282 286	np	137 512	np	2 373 677
<b>2009</b>									
March Quarter	701 611	452 833	657 520	112 463	291 336	np	102 031	np	2 426 755
June Quarter	509 868	315 060	702 006	82 190	232 896	np	166 586	np	2 075 288
September Quarter	530 044	289 071	709 407	88 616	198 779	17 777	162 500	40 156	2 036 350
BED OCCUPANCY RATE (%)									
<b>2008</b>									
September Quarter	50.8	41.5	60.8	41.2	55.4	11.8	69.0	60.0	52.2
December Quarter	67.5	46.9	57.0	42.3	64.5	np	50.0	np	56.5
<b>2009</b>									
March Quarter	68.0	59.6	54.9	52.9	66.6	np	39.8	np	59.2
June Quarter	48.8	40.7	58.6	37.1	53.2	np	63.1	np	50.1
September Quarter	48.5	36.5	57.0	39.3	46.4	13.9	60.1	60.7	47.9
GUEST ARRIVALS (no.)									
<b>2008</b>									
September Quarter	173 573	93 117	286 292	37 111	59 743	9 693	84 768	19 318	763 615
December Quarter	188 415	103 286	259 876	35 293	74 946	np	55 172	np	757 660
<b>2009</b>									
March Quarter	205 856	123 041	261 564	41 385	70 260	np	40 860	np	796 892
June Quarter	167 070	88 308	269 496	30 048	66 216	np	64 202	np	716 569
September Quarter	157 860	81 368	297 155	29 500	57 908	8 894	64 511	18 828	716 024

np not available for publication but included in totals where applicable, unless otherwise indicated

(a) Comprising establishments with 25 or more bed spaces.

<i>Period</i>	<i>New South Wales</i>	<i>Victoria</i>	<i>Queensland</i>	<i>South Australia</i>	<i>Western Australia</i>	<i>Tasmania</i>	<i>Northern Territory</i>	<i>Australian Capital Territory</i>	<i>Australia</i>
---------------	--------------------------------	-----------------	-------------------	----------------------------	------------------------------	-----------------	-------------------------------	---	------------------

AVERAGE LENGTH OF STAY (*days*)

<b>2008</b>									
September Quarter	3.1	3.5	2.7	2.5	4.2	1.6	2.3	2.0	2.9
December Quarter	3.8	3.4	2.8	2.7	3.8	np	2.5	np	3.1
<b>2009</b>									
March Quarter	3.4	3.7	2.5	2.7	4.1	np	2.5	np	3.0
June Quarter	3.1	3.6	2.6	2.7	3.5	np	2.6	np	2.9
September Quarter	3.4	3.6	2.4	3.0	3.4	2.0	2.5	2.1	2.8

## TAKINGS FROM ACCOMMODATION (\$'000)

<b>2008</b>									
September Quarter	15 200	9 228	19 562	1 888	6 629	392	5 604	1 250	59 754
December Quarter	20 721	9 691	17 492	2 241	7 391	np	3 471	np	63 373
<b>2009</b>									
March Quarter	21 259	12 778	16 743	2 595	7 776	np	2 334	np	66 519
June Quarter	14 708	9 178	17 625	2 042	6 255	np	4 636	np	56 439
September Quarter	14 848	8 123	17 414	2 091	5 414	451	4 839	1 264	54 443

np not available for publication but included in totals where applicable, unless otherwise indicated (a) Comprising establishments with 25 or more bed spaces.



## EXPLANATORY NOTES

INTRODUCTION	<p><b>1</b> This publication presents data from the quarterly Survey of Tourist Accommodation (STA). The STA is a mailout collection that completely enumerates all in-scope accommodation establishments within Australia.</p>
SCOPE	<p><b>2</b> From March quarter 2005, the scope of the STA comprises the following categories of establishments:</p> <ul style="list-style-type: none"><li>■ licensed hotels and resorts with facilities and 5 or more rooms</li><li>■ motels, private hotels and guest houses with facilities and 5 or more rooms</li><li>■ serviced apartments with 5 or more units</li><li>■ caravan parks with 40 or more powered sites</li><li>■ holiday flats, units and houses of letting entities with 15 or more rooms or units</li><li>■ visitor hostels with 25 or more bed spaces.</li></ul> <p><b>3</b> With the exception of caravan parks, these establishments provide predominantly short-term non-residential accommodation, i.e. accommodation which is not leased, and which is provided to guests who would generally stay for periods of less than two months. Some of these establishments also provide long-term residential accommodation. The amount of such activity is considered to be insignificant and is included in the data presented in this publication.</p> <p><b>4</b> Caravan parks provide either short-term or long-term accommodation. If a caravan park has the majority of sites occupied by paying guests who have stayed continuously for two months or more during the survey period, the caravan park is classified as long-term. Data for caravan parks are presented by short-term and long-term in this publication.</p> <p><b>5</b> Previous to March quarter 2005, the scope of the STA comprised:</p> <ul style="list-style-type: none"><li>■ licensed hotels and resorts with facilities and 15 or more rooms</li><li>■ motels, private hotels and guest houses with facilities and 15 or more rooms</li><li>■ serviced apartments with 15 or more units.</li></ul> <p><b>6</b> For the four quarters of 2000 and 2003, the scope of the STA was expanded to include:</p> <ul style="list-style-type: none"><li>■ caravan parks with 40 or more powered sites</li><li>■ holiday flats, units and houses of letting entities with 15 or more rooms or units</li><li>■ visitor hostels with 25 or more bed spaces.</li></ul>
COVERAGE	<p><b>7</b> The main source of coverage is from the Australian Automobile Association through AAA Tourism Pty Ltd. This is supplemented by notification of new tourism developments and their likely opening dates in selected guides, major tourism journals and periodicals and newspapers. Periodic comparison with lists of accommodation establishments provided by the various tourism organisations and industry associations is also undertaken.</p>
TAKINGS FROM ACCOMMODATION	<p><b>8</b> From 1 July 2000, takings from accommodation include gross revenue from the provision of accommodation, including GST. Takings from meals are excluded. Where businesses are unable to provide the data inclusive of GST, it is automatically adjusted by the ABS prior to aggregation and release in output.</p>
STAR GRADING	<p><b>9</b> Star grade classifications of establishments are continuously revised by AAA Tourism Pty Ltd. This should be taken into account when making comparisons over time. Any queries regarding the star grading process should be directed to AAA Tourism Pty Ltd on (03) 8601 2200 or email &lt;enquiries@aaatourism.com.au&gt;.</p> <p><b>10</b> Data by star grade for states and territories are included in the data cubes that accompany this publication: Tourist Accommodation, Small Area Data (cat. no. 8635.0.55.002 for national data and cat. no. 8635.1.55.001 – 8635.8.55.001 for state/territory data).</p>

## EXPLANATORY NOTES *continued*

### STATISTICAL GEOGRAPHY

**11** Small area statistics for 2009 are classified to the Australian Standard Geographical Classification (ASGC), 2008 Edition (cat. no. 1216.0). Data are coded to the statistical local area (SLA) level. The definitions of the geographical abbreviations can be found under the Explanatory Notes of this publication.

**12** These SLA data are aggregated to tourism regions as defined by relevant state and territory tourism organisations. Tourism regions are reviewed annually and are subject to boundary and name changes. Where changes have occurred care should be taken when making comparisons with previously published data at this level.

**13** Data by tourism regions are no longer presented in this publication. Small area data are provided in the data cubes that accompany this publication: Tourist Accommodation, Small Area Data (cat. no. 8635.0.55.002 for national data and cat. no. 8635.1.55.001 – 8635.8.55.001 for state/territory data).

**14** Details of SLAs, the composition of tourism regions and maps of tourism regions are provided in the ABS publication Tourism Region Maps and Concordance Files, Australia (cat. no. 9503.0.55.001) available from the ABS web site <[www.abs.gov.au](http://www.abs.gov.au)>.

### DATA QUALITY

**15** The survey does not have a sample component and the data are not subject to sampling variability. However, other inaccuracies collectively referred to as non-sampling error may affect the data. These non-sampling errors may arise from a number of sources, including:

- errors in the reporting of data by providers
- errors in the process of capturing data
- imputation for missing data
- definition and classification errors
- incomplete coverage.

**16** Every effort has been made to reduce non-sampling error to a minimum by careful design and testing of questionnaires, and efficient operating procedures and systems used to compile statistics.

## EXPLANATORY NOTES *continued*

### *Response rates*

**17** The response rates for Australia for the most recent quarters are shown below:

#### RESPONSE RATES

	Sep Qtr 2008	Dec Qtr 2008	Mar Qtr 2009	Jun Qtr 2009	Sep Qtr 2009
<i>Activity</i>	%	%	%	%	%
Licensed hotels with facilities					
with 5 to 14 rooms	82.3	74.9	82.1	79.2	83.2
with 15 or more rooms	90.2	88.4	90.3	93.9	91.6
with 5 or more rooms	87.5	83.8	87.5	89.0	88.8
Motels and guest houses					
with 5 to 14 rooms	88.2	83.5	89.0	89.1	91.3
with 15 or more rooms	88.6	89.8	90.1	92.6	91.3
with 5 or more rooms	88.5	87.8	89.7	91.5	91.3
Serviced apartments					
with 5 to 14 rooms	89.8	86.9	89.0	89.7	91.4
with 15 or more rooms	91.3	92.5	93.8	94.4	93.1
with 5 or more rooms	90.9	91.0	93.3	93.2	92.7
Hotels, motels and serviced apartments					
with 5 to 14 rooms	87.1	82.1	87.9	86.9	89.4
with 15 or more rooms	89.5	90.1	90.9	93.3	91.8
with 5 or more rooms	88.8	87.7	90.0	91.4	91.1
Caravan parks	89.4	88.8	92.2	91.8	90.8
Holiday flats, units and houses	85.7	87.3	91.4	94.1	91.8
Visitor hostels	85.7	89.9	92.1	92.1	91.0

### *Imputation rates*

**18** Missing data items are replaced by imputed values based on reported data. Average quarterly movements are applied to previously reported data for each non-responding unit to estimate values for missing data items. Only if previously reported data are not available, then data from a similar unit is used as a 'donor' for the missing data items.

## EXPLANATORY NOTES *continued*

*Imputation rates continued*

**19** The imputation rates for Australia for the most recent quarters are shown below:

### IMPUTATION RATES, NIGHTS OCCUPIED (a)

	Sep Qtr 2008	Dec Qtr 2008	Mar Qtr 2009	Jun Qtr 2009	Sep Qtr 2009
<i>Activity</i>	%	%	%	%	%
<b>Licensed hotels with facilities</b>					
with 5 to 14 rooms	17.2	24.4	14.3	20.4	17.1
with 15 or more rooms	2.6	4.0	2.2	1.7	4.0
with 5 or more rooms	3.0	4.6	2.6	2.2	4.3
<b>Motels and guest houses</b>					
with 5 to 14 rooms	9.3	15.8	7.8	10.1	8.4
with 15 or more rooms	9.2	8.3	7.6	6.4	7.4
with 5 or more rooms	9.3	8.9	7.7	6.7	7.5
<b>Serviced apartments</b>					
with 5 to 14 rooms	9.2	10.6	5.5	8.0	7.1
with 15 or more rooms	5.9	6.1	4.0	4.2	6.0
with 5 or more rooms	6.0	6.3	4.0	4.4	6.0
<b>Hotels, motels and serviced apartments</b>					
with 5 to 14 rooms	10.8	16.4	8.6	11.7	9.8
with 15 or more rooms	5.8	6.0	4.5	4.0	5.7
with 5 or more rooms	6.1	6.6	4.8	4.4	5.9
Caravan parks	8.4	9.0	5.7	6.8	7.4
Holiday flats, units and houses	9.2	11.1	6.2	4.5	7.1
Visitor hostels	15.5	9.3	5.4	4.8	4.8

(a) Based on room nights for hotels, motels and serviced apartments; site nights for caravan parks; unit nights for holiday flats, units and houses; and guest nights for visitor hostels

### IMPUTATION RATES, TAKINGS FROM ACCOMMODATION

	Sep Qtr 2008	Dec Qtr 2008	Mar Qtr 2009	Jun Qtr 2009	Sep Qtr 2009
<i>Activity</i>	%	%	%	%	%
<b>Licensed hotels with facilities</b>					
with 5 to 14 rooms	17.1	24.0	13.9	17.7	15.9
with 15 or more rooms	1.9	3.2	1.6	1.4	3.4
with 5 or more rooms	2.1	3.4	1.7	1.6	3.5
<b>Motels and guest houses</b>					
with 5 to 14 rooms	9.8	17.4	7.9	10.7	8.5
with 15 or more rooms	8.8	8.0	7.1	6.2	7.0
with 5 or more rooms	8.9	8.8	7.1	6.5	7.1
<b>Serviced apartments</b>					
with 5 to 14 rooms	10.1	10.7	5.4	9.7	8.4
with 15 or more rooms	5.1	6.4	3.7	4.1	5.9
with 5 or more rooms	5.3	6.6	3.7	4.3	6.0
<b>Hotels, motels and serviced apartments</b>					
with 5 to 14 rooms	10.9	16.6	8.1	11.5	9.6
with 15 or more rooms	4.6	5.3	3.6	3.4	5.0
with 5 or more rooms	4.9	5.7	3.7	3.7	5.2
Caravan parks	8.2	7.9	5.4	5.4	6.0
Holiday flats, units and houses	8.5	10.8	5.3	4.4	7.5
Visitor hostels	14.7	7.9	4.5	4.2	4.9

## EXPLANATORY NOTES *continued*

### SEASONAL ADJUSTMENT

**20** Seasonal adjustment is a means of removing the estimated effects of normal seasonal variation from the original time series so that the effect of other influences on the series may be more clearly recognised. Seasonal adjustment procedures do not aim to remove the irregular or non-seasonal influences which may be present in any particular quarter. Irregular influences that are highly volatile can make it difficult to interpret the movement of the series even after adjustment for seasonal variation, and cannot be assumed to indicate changes in the trend.

**21** The seasonally adjusted estimates in this publication have been produced using a concurrent methodology whereby the seasonal factors are revised each month to take into account the seasonality exhibited by the latest observation. A more detailed review is conducted annually.

**22** From the March quarter 2008, the Survey of Tourist Accommodation collection implemented Autoregressive Integrated Moving Average (ARIMA) modelling techniques for the majority of applicable time series. The revision properties of the seasonally adjusted and trend estimates can be improved by the use of ARIMA modelling. ARIMA modelling relies on the characteristics of the series being analysed to project future period data. The projected values are temporary, intermediate values, that are only used internally to improve the estimation of the seasonal factors. The projected data do not affect the original estimates and are discarded at the end of the seasonal adjustment process.

**23** For more information on the details of ARIMA modelling see the feature article 'Use of ARIMA modelling to reduce revisions' in the October 2004 issue of Australian Economic Indicators (cat. no. 1350.0). Any queries regarding the ARIMA modelling should be directed to Time Series Analysis on (02) 6252 6345 or email <time.series.analysis@abs.gov.au>.

### TREND ESTIMATES

**24** Smoothing the seasonally adjusted series reduces the impact of the irregular component of the seasonally adjusted series and creates the trend estimates. The trend estimates are derived by applying a 7-term Henderson moving average to the quarterly seasonally adjusted series. The Henderson moving average used in the middle of the time series is symmetric but, as the end of a time series is approached, asymmetric forms of the symmetric moving average are applied. Unlike the weights of the standard 7-term Henderson moving average, the weights used with the quarterly data have been tailored to suit the particular characteristics of individual series.

**25** While these techniques enable trend estimates for the latest period to be produced, the process does result in revisions to the trend estimates in recent quarters, particularly as additional original estimates become available. For further information refer to Information Paper: A Guide to Interpreting Time Series - Monitoring Trends, 2003 (cat. no. 1349.0) available at the ABS web site <www.abs.gov.au>.

### CONFIDENTIALISATION OF DATA

**26** Under the Census and Statistics Act, when releasing statistics the ABS is required to do this in a manner that is "not likely" (in a legal sense) to enable the identification of a particular person or organisation. A number of techniques are used to do this, including suppression of information. To ensure provider confidentiality in the Survey of Tourist Accommodation, the ABS uses a computerised process known as Disclosure Avoidance Analysis System (DAAS) to confidentialise the entire tourist accommodation dataset each quarter. This process not only ensures that data are suppressed to ensure individual establishments cannot be identified, but also suppresses data in other (consequential) cells to ensure data cannot be derived through deduction from the information available.

## EXPLANATORY NOTES *continued*

### CONFIDENTIALISATION OF DATA *continued*

**27** While the scope and coverage of the Survey of Tourist Accommodation has been expanded, priority has been given to maintaining the integrity and continuity of the core collection (hotels, motels and guest houses, and serviced apartments with 15 or more rooms). In order to maximise data released from the core collection series and the new components of the expanded scope collection (hotels, motels and guest houses, and serviced apartments with 5-14 rooms), the 'total' series (5 or more rooms) has been used for any consequential confidentiality required where possible.

**28** The DAAS process begins by confidentialising at the Statistical Local Area (SLA) level, then across Tourism regions, then at the state level and finally the national level. If there is an SLA that has been made confidential then another SLA will have to be made confidential within that Tourism region to protect the confidentiality of the providers in the SLA that was originally made confidential. Depending on the number of SLAs in the Tourism region the whole Tourism region may need to be made confidential. As a consequence of this, at least one more Tourism region within a state or territory will also be confidentialised. This may also occur at the state/territory level.

### USER AGGREGATION OF DATA

**29** The aggregation of data by users across time periods should be undertaken with caution, due to the possibility of non-inclusion of confidentialised data (see the above section for more information about confidentialisation). Where one or more cells contributing to a total have been confidentialised (ie, contains the value of n.p.), the resulting aggregated total will be incorrect. However, some broader levels of data may not be affected by confidentialised cells.

**30** Where data can be aggregated (ie, no confidentialised cells are included) for calendar and financial year/s purposes, the data items Establishments, Rooms, Persons employed and Bed spaces should not be aggregated. For these items it is recommended that for calendar years, the value of the December quarter is used, and for financial years, the value of the June quarter is used.

**31** Any data items that have been derived from other items collected in the survey cannot be aggregated (ie, all those with labels ending in 'rate' or commencing with 'average'). These items must be re-derived based on the aggregation of each of the quarterly items collected in the survey used in the derivation of the rate or average (see Glossary for formulas).

**32** Users are cautioned against deriving any non-standard aggregations (eg, aggregation of selected star gradings such as 4-star and 5-star; aggregation of selected geographical areas such as capital city areas and balance of state; aggregation of selected activities such as hotels and motels combined). This is because data are confidentialised based on the standard data item structure.

### EFFECTS OF ROUNDING

**33** Where figures have been rounded, discrepancies may occur between totals and the sum of the component items.

### RELATED PUBLICATIONS

**34** Other ABS publications and products which may be of interest are outlined below.

## EXPLANATORY NOTES *continued*

### RELATED PUBLICATIONS

*continued*

All publications released from 1998 onwards are available on the ABS web site <[www.abs.gov.au](http://www.abs.gov.au)>.

Tourist Accommodation, Small Area Data (cat. no. 8635.0.55.002) (data cube for Australia – issued quarterly)

Tourist Accommodation, Small Area Data (cat. no. 8635.1.55.001–8635.8.55.001) (data cubes for each state/territory – issued quarterly)

Tourism Region Maps and Concordance Files, Australia (cat. no. 9503.0.55.001) (annual)

Tourist Accommodation, Australia, Expanded Scope Collection (cat. no. 8635.0.55.001) (irregular)

Short-term Visitor Arrivals Estimates, Australia (cat. no. 3401.0.55.001) (issued monthly)

Overseas Arrivals and Departures, Australia (cat. no. 3401.0) (issued monthly)

Australian National Accounts, Tourism Satellite Account (cat. no. 5249.0) (annual)

**35** The catalogue of current publications and other products is available from the ABS web site <[www.abs.gov.au](http://www.abs.gov.au)>. The ABS also issues release advices on the web site which detail products to be released both in the coming week and the next six months.

### ABS DATA AVAILABLE ON REQUEST

**36** As well as the statistics included in this publication, the ABS has other relevant data available on request. Inquiries should be made to the National Information and Referral Service on 1300 135 070.

## GLOSSARY

<b>Average length of stay</b>	<p>Average number of days each guest stayed during the reference period. It is a derived item calculated by dividing the number of guest nights occupied by the number of guest arrivals with the result expressed as a number of days,</p> $\text{Average length of stay(days)} = \frac{\text{Guest nights occupied}}{\text{Guest arrivals}}$
<b>Average takings per available room night</b>	<p>The takings from accommodation divided by the total number of room nights available for the survey period,</p> $\text{Average takings per available room night(\$)} = \frac{\text{Takings from accommodation}}{\text{Room nights available}}$
<b>Average takings per room night occupied</b>	<p>The takings from accommodation divided by the total number of room nights occupied for the survey period,</p> $\text{Average takings per room night occupied(\$)} = \frac{\text{Takings from accommodation}}{\text{Room nights occupied}}$
<b>Bed occupancy rate</b>	<p>The bed occupancy rate represents bed occupancy expressed as a percentage of total capacity available during the survey period,</p> $\text{Bed occupancy rate (\%)} = \frac{\text{Guest nights occupied}}{\text{Guest nights available}} * 100$
<b>Bed spaces</b>	<p>The maximum number of bed spaces normally in place available to accommodate paying guests during the survey period. Three-quarter beds are counted as one bed space; double beds as two bed spaces. Cots and divans not normally used as beds are excluded.</p>
<b>Cabins, flats, units and villas</b>	<p>The maximum number of cabins, flats, units and villas available at caravan parks for accommodating paying guests during the survey period.</p>
<b>Capacity</b>	<p>Capacity in terms of rooms/units/apartments/suites, visitor hostel bed spaces, holiday flats/units/houses or caravan park sites is the maximum number available to accommodate paying guests on the last day of the survey period. Capacity closed temporarily for seasonal reasons is included.</p>
<b>Caravan park sites</b>	<p>The measure of total caravan park capacity available for accommodating paying guests during the survey period. Includes on-site vans, other powered sites, unpowered sites and cabins, flats, units and villas.</p>
<b>Caravan parks</b>	<p>Establishments with 40 or more powered sites and cabins, flats, units and villas which provide either short-term or long-term accommodation to the general public and which provide powered sites for caravans and toilet, shower and laundry facilities for guests.</p>
<b>Caravan parks, long-term</b>	<p>Caravan parks where the majority of paying guests occupied sites for periods of two months or more.</p>
<b>Caravan parks, short-term</b>	<p>Caravan parks where the majority of paying guests occupied sites for periods of less than two months.</p>
<b>Establishments</b>	<p>The number of licensed hotels and resorts, motels and guest houses, serviced apartments, caravan parks and visitor hostels within the scope of the survey which operated for any part of the survey period, or which closed temporarily for the quarter for seasonal reasons.</p>
<b>Guest arrivals</b>	<p>The total number of paying guests counted only on the first night they stayed at the accommodation establishment during the survey period.</p> <p>For holiday flats, units and houses this is the same as unit lettings.</p> <p>This data item is not collected for caravan parks.</p>
<b>Guest nights available</b>	<p>The total number of nights available to all paying guests during the survey period.</p> <p>This is derived from the number of bed spaces multiplied by the number of days for which they were available during the survey period. For establishments closing (other than for seasonal reasons) or opening during this period, operating periods only are included.</p>



## GLOSSARY *continued*

<b>Guest nights occupied</b>	The total number of paying guests counted on each night they stayed at the accommodation establishment during the survey period.
<b>Holiday flats, units and houses</b>	The total number of holiday flats, units and houses (excluding establishments predominantly operated on a time-share basis) operated by letting entities (i.e. owners, managers or real estate agents) who have sole letting rights to at least 15 flats, units or houses for short-term letting. These flats, units or houses should be mainly self-contained in terms of cooking, bath (or shower) and toilet facilities and should not have breakfast available for guests. Data for holiday flats, units or houses include short-term owner operators as well as paying guest accommodation.
<b>Hotels</b>	See licensed hotels and resorts with facilities.
<b>Letting entities</b>	For holiday flats, units and houses, the number of owners, managers or real estate agents within the scope of the survey who operated for any part of the survey period.
<b>Licensed hotels and resorts with facilities</b>	Establishments with five or more rooms which are licensed to operate a public bar and which provide accommodation on a room/suite basis, with a bath/shower and toilet in most guest rooms, but which do not have full cooking facilities (i.e. hot plates and oven/microwave) in most guest rooms.
<b>Motels, private hotels and guest houses with facilities</b>	Establishments with five or more rooms which are not licensed to operate a public bar, and which provide accommodation on a room/suite basis, with a bath/shower and toilet in most guest rooms, but which do not have full cooking facilities (i.e. hot plates and oven/microwave) in most guest rooms.
<b>Multiple bedroom holiday flats, units and houses</b>	The total number of holiday flats, units and houses available with multiple bedrooms.
<b>Occupancy</b>	<p>Occupancy in terms of room nights, unit nights or site nights occupied refers to the total number of nights each room, unit or caravan park was occupied during the survey period.</p> <p>Occupancy in terms of guest nights refers to the total number of paying guests counted on each night they stayed at the accommodation establishment during the survey period.</p>
<b>On-site vans</b>	The maximum number of vans owned or leased by the establishment for the purpose of providing accommodation to the general public.
<b>Other powered sites</b>	The maximum number of sites with provision for connection to electric power supply, available at caravan parks for accommodating paying guests during the survey period, excluding powered sites occupied by on-site vans, and cabins, flats, units and villas.
<b>Other sites permanently reserved</b>	The total number of powered and unpowered sites, on-site vans and cabins, flats, units and villas continuously let for two months or more on the last day of the survey period to tenants who occupy the sites only on a casual or sporadic basis.
<b>Persons employed</b>	The total number of persons working at each accommodation establishment at the end of the survey period (including working proprietors and those working on other than accommodation activities). This data item is not applicable to holiday flats, units and houses let by real estate agents.
<b>Room nights available</b>	The number of rooms/units available multiplied by the number of days for which they were available during the survey period. For establishments closing (other than for seasonal reasons) or opening during this period, operating periods only are included.
<b>Room nights occupied</b>	The number of nights each guest room/unit was occupied by a paying guest during the survey period.
<b>Room occupancy rate</b>	<p>The room occupancy rate represents room occupancy expressed as a percentage of total capacity available during the survey period,</p> $\text{Room occupancy rate (\%)} = \frac{\text{Room nights occupied}}{\text{Room nights available}} * 100$

## GLOSSARY *continued*

<b>Room occupancy rate</b> <i>continued</i>	providing that, for establishments closing (other than for seasonal reasons) or opening during the survey period, the denominator of the above expression includes only operating periods.
<b>Rooms</b>	The maximum number of rooms available for accommodating short-term paying guests at each licensed hotel and resort, motel and guest house and serviced apartment during the survey period. Units, apartments and suites are treated as rooms for these types of establishments in these survey results.
<b>Serviced apartments</b>	Establishments with five or more units which mostly comprise self-contained units at the same location, and which are available on a unit/apartment basis to the general public for a minimum of one night. The units should have full cooking facilities (i.e. hot plates and oven/microwave), refrigerator and bath/shower and toilet facilities; all bed linen and towels should be provided, and daily servicing (i.e. cleaning and bed making) must be available through the on-site management, although this service may not necessarily be used.
<b>Single bedroom holiday flats, units and houses</b>	The total number of holiday flats, units and houses available with a single bedroom.
<b>Site nights available</b>	The number of caravan park sites available multiplied by the number of days for which they were available during the survey period. For establishments closing (other than for seasonal reasons) or opening during this period, operating periods only are included.
<b>Site nights occupied</b>	The total number of nights each caravan park site was occupied during the survey period.
<b>Site occupancy rate</b>	<p>The site occupancy rate for caravan parks represents site occupancy expressed as a percentage of total capacity available during the survey period,</p> $\text{Site occupancy rate (\%)} = \frac{\text{Site nights occupied}}{\text{Site nights available}} * 100$ <p>providing that, for establishments closing (other than for seasonal reasons) or opening during the survey period, the denominator of the above expression includes only operating periods.</p>
<b>Sites occupied by long-term guests</b>	The total number of caravan park sites occupied on the last day at the end of the survey period by guests who have stayed continuously for two months or more.
<b>Star grading</b>	<p>The grading of hotels, motels and guest houses with facilities and serviced apartments is based on the classification system owned by AAA Tourism Pty Ltd. The gradings are allocated according to a points system based on the amenities and facilities available to guests. Details of the grading scheme are contained in the publication <i>Accommodation Guide</i> published by AAA Tourism Pty Ltd for each of the individual Australian Motoring Organisations. For the purpose of classifying establishments to a star grading in this publication, 'half' star gradings are ignored (e.g. a two and a half star grading has been shown as two star).</p> <p>While coverage has significantly improved, some establishments (including some competing in the four and five star markets and having significant takings) still remain outside the star grading scheme. These establishments have been given a star grading of 'ungraded'.</p>
<b>Takings from accommodation</b>	<p>Since 1 July 2000, takings from accommodation include gross revenue from the provision of accommodation, including GST. Takings from meals are excluded. In cases where takings from accommodation data cannot be provided inclusive of GST the amount of GST payable is estimated and the data revised accordingly.</p> <p>Takings from accommodation for each month generally represent the takings received during that month. Where payments are received in advance of, or after the provision of accommodation to guests, the monthly figure for takings from accommodation may not necessarily bear a direct relationship to the number of guests accommodated during the month.</p>

## GLOSSARY *continued*

<b>Unit lettings</b>	The total number of times a holiday flat, unit or house was occupied by a new tenant, counted only on the first night it was occupied by the new tenant. This is the equivalent of guest arrivals.
<b>Unit nights available</b>	The number of holiday flats, units and houses available multiplied by the number of days for which they were available during the survey period. For establishments closing (other than for seasonal reasons) or opening during this period, operating periods only are included.
<b>Unit nights occupied</b>	The total number of nights each holiday flat, unit or house was occupied during the survey period.
<b>Unit occupancy rate</b>	<p>The unit occupancy rate for holiday flats, units and houses represents unit occupancy expressed as a percentage of total capacity available during the survey period,</p> $\text{Unit occupancy rate (\%)} = \frac{\text{Unit nights occupied}}{\text{Unit nights available}} * 100$ <p>providing that, for letting entities closing (other than for seasonal reasons) or opening during the survey period, the denominator of the above expression includes only operating periods.</p>
<b>Unpowered sites</b>	The maximum number of sites with no provision for connection to electric power supply, available at caravan parks for accommodating paying guests during the survey period.
<b>Visitor hostels</b>	Establishments with 25 or more bed spaces which provide accommodation to visitors on a bed basis (rather than by room). This category does not include establishments providing charity type accommodation (e.g. Salvation Army hostels) nor hotels, motels and guest houses without in-room facilities which provide accommodation on a per room basis.

## FOR MORE INFORMATION . . .

### INTERNET

**www.abs.gov.au** the ABS website is the best place for data from our publications and information about the ABS.

## INFORMATION AND REFERRAL SERVICE

Our consultants can help you access the full range of information published by the ABS that is available free of charge from our website. Information tailored to your needs can also be requested as a 'user pays' service. Specialists are on hand to help you with analytical or methodological advice.

### PHONE

1300 135 070

### EMAIL

client.services@abs.gov.au

### FAX

1300 135 211

### POST

Client Services, ABS, GPO Box 796, Sydney NSW 2001

## FREE ACCESS TO STATISTICS

All statistics on the ABS website can be downloaded free of charge.

### WEB ADDRESS

**www.abs.gov.au**